

***Brachyta interrogationis eitschbergeri* ssp. n. (Coleoptera,
Cerambycidae) - black subspecies from south-east Germany**

M.L. Danilevsky¹ & H. Peks²

¹A.N. Severtzov Institute of Ecology and Evolution, Russian Academy of Sciences,
Leninsky prospect 33, Moscow 119071 Russia

e-mail: danilevskym1@rambler.ru, danilevsky@cerambycidae.net

²Röthenweg Str. 7, Schwanfeld, 97523 Deutschland

e-mail: heinz.peks@googlemail.com

Key words: new subspecies, Cerambycidae, Lepturinae, Germany.

Abstract: *Brachyta interrogationis eitschbergeri* ssp. n. is described from near Marktleuthen (Bavaria). The new taxon is characterized by totally (or nearly totally) black elytra of males and females.

Black populations of *Brachyta interrogationis* (Linnaeus, 1758) from Bavaria were known long ago (Eitschberger & Steiniger, 1978a, 1978b).

The complex of peculiar local populations from Marktleuthen environs is described bellow as a new subspecies on the base of more than two hundred specimens.

Abbreviations of collections:

MD - collection of M.L. Danilevsky (Moscow)

SM - collection of S.V. Murzin (Moscow)

HP - collection of H. Peks (Schwanfeld)

***Brachyta interrogationis eitschbergeri* ssp. n.**

Figs 1-6

The new subspecies is characterized by about totally black elytra in all males and females; only small lateral yellow elytral spots usually present together with narrow yellow line along suture often protruding around elytral apices; elytra without yellow areas are also known.

Body in males slightly tapering posteriorly; elytra in females nearly parallelsided; antennae in males surpassing elytral middle or just reaching elytral middle in females; 1st antennal joint a little

M.L. Danilevsky, H. Peks

longer than 4th, shorter than 3rd, which is about as long as 5th; prothorax in males a little longer than basal width, in females about as long as basal width; pronotal punctation very dense with conjugated dots, but postero-middle small shining elongated area with scattered dots always present; pronotum covered with dense oblique pubescence with several longer erect setae; elytra in males about 1.9-2.0 times longer, than basal width, in female - 1.8-1.9 times; elytral punctation rather distinct and very dense, partly conjugated; elytral pubescence very dense, oblique with scattered longer erect setae, more numerous anteriorly; totally black elytra without yellow spots are very rare, but can be observed in males and in females; usually elytra with two small lateral yellow spots, yellow epipleurae and narrow yellow line along suture, sometimes only one yellow spot present and suture totally black; often lateral yellow spots larger, conjugated, sutural yellow line wider and small yellow spot can be seen near apex; legs always totally black with slightly widened anterior tarsi in males; pygidium in males with shallow emargination, postpygidium with deeper emargination; pygidium in females also slightly emarginated; last abdominal sternite in males and in females rounded; body length in males: 10.5-13.0 mm, width: 3.8 -4.7 mm; body length in females: 11.5-15.0 mm, width: 4.2-5.8 mm

Materials. Holotype, male, Germany, Bavaria, Fichtelgebirge, south suburb of Marktleuthen, 50°7'28"N, 11°59'47"E, 534 m, 16.5.2014, A.Dantchenko & U.Eitschberger leg. - MD; 237 paratypes; 6 males, 4 females with same label - MD; 1 male, 1 female from same locality, but 17.5.2014, A.Dantchenko & U.Eitschberger leg. - SM; 2 females, same locality, 7.6.1978, U.Eitschberger leg. - HP; 94 males, 51 females, about 500 m northwards Marktleuthen, Waffel, 50°8'11"N, 11°59'52"E, 535 m, 22-23.6.1977, U.Eitschberger leg. - HP; 1 male, same locality, 17.6.1974, U.Eitschberger leg. - HP; 47 males, 26 females, Germany, Bavaria, Heidelberg (about 4 km NE Marktleuthen), 50°9'10"N, 12°3'1"E, 589 m, and 50° 8'50"N, 12° 3'21"E, 577 m, 24.6.1977, U.Eitschberger leg. - HP; 1male, 3 females, Rüggersgrün (about 6 km SE Marktleuthen), 50°5'15"N, 12°3'8"E, 612 m, 4.7.1977, U. Eitschberger leg. - HP.

The data of the labels written by H.Peks are not quite

M.L. Danilevsky, H. Peks

coinciding with the information received by M. Danilevsky from the collector. According to U. Eitschberger (personal message, 1.10.2015): about all specimens were collected by him southwards Marktleuthen (50°7'28"N, 11°59'47"E), few - in Waffel (50°8'11"N, 11°59'52"E).

Distribution. Germany, Bavaria, Fichtelgebirge, Marktleuthen and environs; many localities are definitely known in the area after observations by Ulf Eitschberger (personal message, 1.10.2015), though most of them are not represented by available specimens: centre of Marktleuthen (522m, 50°7'48"N, 11°59'44"E), south suburb of Marktleuthen (50°7'28"N, 11°59'47"E, 534m), Waffel (about 500 m northwards Marktleuthen, 50°8'11"N, 11°59'52"E, 535 m - meadows between street and forest); Leuthenforst (536m, 50°7'53"N, 12°2'32"E - a group of houses 1-1.5 km eastwards Marktleuthen and belonging to it); Heidelberg (about 4 km north-eastwards Marktleuthen, 50°9'10"N, 12°3'1"E, 589 m and 50°8'50"N, 12°3'21"E, 577m), Rüggersgrün (about 5km south-eastwards Marktleuthen, 50°5'15"N, 12°3'8"E, 612 m), Eckenmühle (about 1 km eastwards Marktleuthen, 538 m, 50° 7'25"N, 11°58'38"E), Schützenhaus (about 1 km southwards Marktleuthen, 50°6'26"N, 11°59'36"E, 551 m), north environs of Neudes (about 2 km southwards Marktleuthen: 50°6'24"N, 12°0'6"E, 554m; 50°6'47"N, 12°0'8"E, 541 m).

According to U. Eitschberger (personal message, 2015) several localities of the taxon look now to be extinct by anthropogenic managements.

Both authors suppose a larger area of the subspecies, which could penetrate to neighbor areas of Germany and to Czechia. We'll try to obtain more series from Bavaria and Bohemia for the next study.

Several available names of black forms of *B. interrogationis* were introduced for Italy and South France: *Leptura marginella* Fabricius, 1793: 346 - "Habitat in Italia"; *Pachyta duodecimmaculata* var. *flavonotata* Mulsant, 1839: 239 - "les Alpes"; *P. d.* var. *bimaculata* Mulsant, 1839: 240 - "les Alpes"; *P. d.* var. *ebenina* Mulsant, 1839: 240 - "les Alpes", but the validity of each one is not clear now.

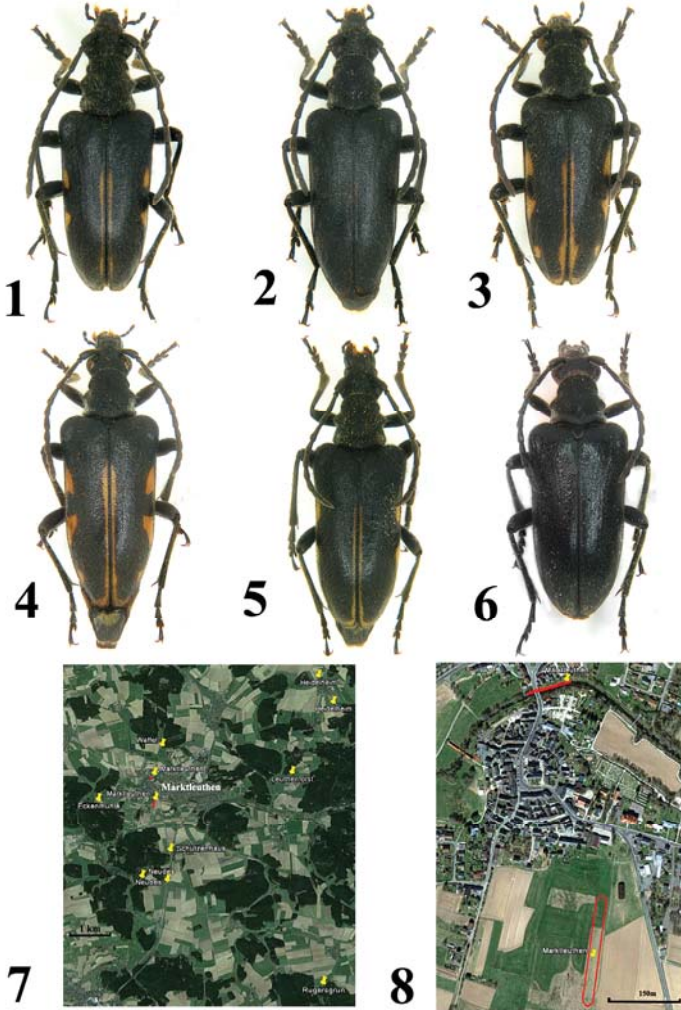
M.L. Danilevsky, H. Peks

Etymology. The new taxon is dedicated to Ulf Eitschberger, who discovered the new taxon and described to the authors its area.

Acknowledgements. We are very grateful to Ulf Eitschberger for his materials and locality information. We also express our sincere gratitude to Alexander Dantchenko and Sergey Murzin who supplied us with several specimens and own data.

REFERENCES

- Eitschberger U., Steiniger H. 1978a. Zur Variationsbreite von *Evodinus interrogationis* (Linné) im Fichtelgebirge (Coleoptera, Cerambycidae). Entomologische Zeitschrift (Stuttgart). 88(17): 189-193.
- Eitschberger U., Steiniger H. 1978b. Nachtrag zum Vorkommen von *Evodinus interrogationis* im Fichtelgebirge (Coleoptera, Cerambycidae). - Entomologische Zeitschrift (Stuttgart). 88(20): 236.
- Fabricius J.C. 1793. Entomologia systematica emendata et aucta, secundum classes, ordines, genera, species, adjectis, synonymis, locis, observationibus, descriptionibus. Tomus I. Pars II [1792]. Hafniae: C. G. Proft, xx + 538 pp.
- Mulsant E. 1839. Histoire naturelle des Coléoptères de France. Longicornes. Maison Libraire, Paris. Imprimerie de Dumoulin, Ronet et Sibuet, Lyon. 304 pp., 3 pls.



Figs 1-6. *Brachyta interrogationis eitschbergeri* ssp. n.: 1. Male holotype; 2. Males, paratype, south suburb of Marktleuthen, 16.5.2014, A.Dantchenko & U.Eitschberger leg.; 3. Male, paratype, Waffel, 22-23.6.1977, U.Eitschberger leg.; 4. Female, paratype, Waffel, 22-23.6.1977, U.Eitschberger leg.; 5. Female, paratype, south suburb of Marktleuthen, 16.5.2014, A.Dantchenko & U.Eitschberger leg.; 6. Female, paratype, south suburb of Marktleuthen, 7.6.1978, U.Eitschberger leg.; 7 Area of *Brachyta interrogationis eitschbergeri* ssp. n. (according to U. Eitschberger data); 8 Localities of *Brachyta interrogationis eitschbergeri* ssp. n. in Marktleuthen (according to A.Dantchenko data).

Received: 11.10.2015

Accepted: 27.10.2015