

# A Review of Host Plants of Cerambycidae (Coleoptera: Chrysomeloidea) with new Host Records for Fourteen Cerambycids, Including the Asian Longhorn Beetle (*Anoplophora glabripennis* Motschulsky), in Korea

Jongok Lim, Su-Young Jung<sup>1</sup>, Jong-Su Lim<sup>2</sup>, Jin Jang<sup>3</sup>, Kyung-Mi Kim<sup>4</sup>, You-Mi Lee<sup>1</sup> and Bong-Woo Lee<sup>1\*</sup>

Departamento de Biologia, Universidade Federal do Espírito Santo, Vitoria, Espírito Santo 29040-090, Brazil

<sup>1</sup>Division of Forest Biodiversity, Korea National Arboretum, Soheul-eup, Pocheon-si, Gyeonggi-do 487-821, Republic of Korea

<sup>2</sup>Yeongwol Donggang Ecological Park, Samok-ri, Yeongwol-eub, Yeongwol-gun, Gangwon-do 230-888, Republic of Korea

<sup>3</sup>Division of Experiment and Analysis, Incheon International Airport, Regional Office Animal and Plant Quarantine Agency, Woonseo-dong, Jung-gu, Incheon 400-718, Republic of Korea

<sup>4</sup>Usan-Sangwon Technical Development Co., Ltd., Usan-dong, Gwangsan-gu, Gwangju 506-814, Republic of Korea

## 유리알락하늘소를 포함한 14종 하늘소의 새로운 기주식물 보고 및 한국산 하늘소과(딱정벌레목: 잎벌레상과)의 기주식물 재검토

임종옥 · 정수영<sup>1</sup> · 임종수<sup>2</sup> · 장진<sup>3</sup> · 김경미<sup>4</sup> · 이유미<sup>1</sup> · 이봉우<sup>1\*</sup>

브라질 에스피리토 산토 연방대학교 생물학과, <sup>1</sup>국립수목원 산림생물조사과, <sup>2</sup>영월동강생태공원, <sup>3</sup>농림축산검역본부 인천국제공항 시험분석과, <sup>4</sup>상원기술개발

**ABSTRACT:** A revised checklist of host plants for 181 species belonging to 103 genera in six subfamilies of Cerambycidae (Coleoptera: Chrysomeloidea) in Korea is provided on the basis of the results of field surveys and literature review. A total of 14 new cerambycid-host associations are confirmed and the Manchurian striped maple, *Acer tegmentosum* Maxim. (Aceraceae), is listed as a new host of the Asian longhorn beetle, *Anoplophora glabripennis* (Motschulsky). The names of more than 170 host plants species belonging to 107 genera in 44 families are compiled. Among them, four families (Ulmaceae, Pinaceae, Fagaceae and Betulaceae) are confirmed as the main host families (more than 23%) of most of the cerambycid species. All invalid scientific names and Korean names of plants and cerambycids in the previous literature are corrected in the present paper.

**Key words:** Long-horned beetle, Wood-boring insect, Larvae, Host plant, Korea

**초록:** 직접적인 기주식물 조사와 기존 문헌자료의 기록을 재검토하여, 한국산 하늘소과(딱정벌레목: 잎벌레상과) 6아과 103속 181종의 기주식물 목록을 작성하였다. 유리알락하늘소의 새로운 기주식물로 산겨릅나무가 확인된 것을 포함하여 총 14종의 하늘소와 기주식물 관계를 구명하였다. 기주식물로 44과 107속 170종 이상이 정리되었다. 이 중, 네 과(느릅나무과, 소나무과, 참나무과, 자작나무과)가 주요 기주식물 과(하늘소 기록 종수의 23% 이상 차지)인 것으로 확인되었다. 기존 문헌들에서 기주식물과 하늘소류의 무효한 학명과 국명들은 현재 통용하고 있는 유효한 학명과 국명으로 수정하였다.

**검색어:** 하늘소, 천공성 곤충, 유충, 기주식물, 한국

The Cerambycidae are one of species rich family of Chrysomeloidea (Insecta: Coleoptera), and all members are

commonly called as longhorn beetles, long-horned beetles or longicorn beetles.

The family are comprised of approximately 25,000 described species in nine subfamilies worldwide (Sama et al., 2010; Bouchard et al., 2011) and 318 species are known from

\*Corresponding author: [eucosma@korea.kr](mailto:eucosma@korea.kr)

Received September 13 2013; Revised November 28 2013

Accepted February 5 2014

the Korean fauna (Lee, 1987; Danilevsky, 1992; Paek et al., 2010; Danilevsky, 2013; Lim et al., 2012, 2013a, b; Oh, 2013; Oh and Lee, 2013) since Kolbe (1886) recorded first Korean cerambycids.

Cerambycids inhabit deciduous and coniferous forests, large open meadows, steppes and semi-deserts. Most species are associated with woods and shrubs, live on herbaceous vegetation in open areas (Cherepanov, 1988). The larvae cause damages of host plants by boring into heart wood and making galleries. In many cases, it is not easy to recognize damage on plants when larvae are at early stages of development.

Adults of many species of the subfamily Lepturinae are well known pollinators (Fig. 1A). On the other hand, several cerambycids have been categorized as economic pests because they can seriously debilitate or kill commercial and ornamental plants as well as cause severe damage to timber already in service (Webb, 1987).

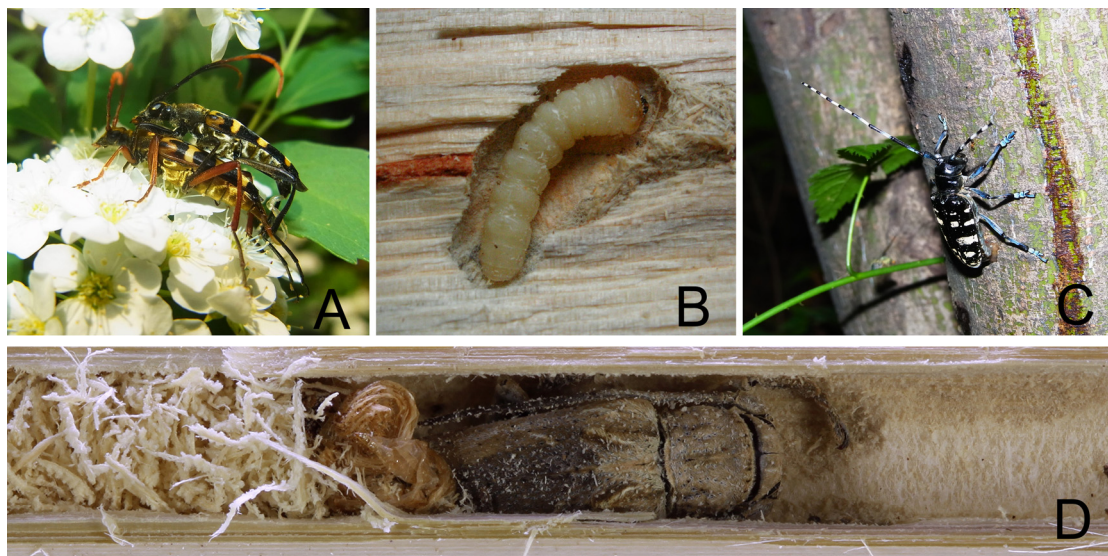
For instance, *Monochamus* species (Fig. 1B) are known as vectors of the pine wood nematode (*Bursaphelenchus xylophilus* (Steiner & Buhner)) which causes devastating damage on pine forests in North America, East Asia and Europe. Another example is the Asian longhorned beetle, *Anoplophora grabripennis* (Motschulsky) (Fig. 3), that is considered to be one of the most damaging exotic forest insects

that have established in the United States during recent years (the established populations of the beetle were first reported in 1996) (Haack et al., 1997; 2006) and it has been causing serious economic damage on a wide range of hardwood trees, including maple (Fig. 1C).

In Korea, more than 130 cerambycids were listed as insect pests of woody plants and shrubs, and 11 species of them, such as *Batocera lineolata* Chevrolat, are regarded as major wood-boring insect pests in the forest (Ko, 1969; Chung et al., 1995).

Up to now, many studies on host plants of cerambycid beetles have been carried out at national or biogeographic level (Halperin and Holzschuh, 1993; Di Iorio, 1997; Linsley and Chemsak, 1997; Hua, 2002; Sama, 2002; Kojima and Nakamura, 2011; MacRae et al., 2012).

In Korea, the first extensive study on host plants of cerambycids (125 species) was made by Cho (1959) and a summarized list of cerambycid pests and their hosts were provided by Ko (1969) and Chung et al. (1995). Later, Kang et al. (2002) also listed up the host plants of 85 cerambycid species. However, scientific names and Korean names in those works were mostly outdated so that they need to be updated with names currently in use.



**Fig. 1.** Two ecological aspects of Cerambycidae. A, *Leptura arcuata* as pollinator on a plant, *Viburnum opulus* f. *hydrangeoides* (Nakai) Hara (Caprifoliaceae); B, insect pest, a larva of *Monochamus salturius* as a vector of the pine wood nematode within a host, *Pinus koraiensis* Siebold & Zucc. (Pinaceae); C, a female of *Anoplophora grabripennis* (Mot.), ovipositing eggs into a host, *Acer tegmentosum* Maxim. (Aceraceae); D, an adult of *Niphona furcata* within a host, *Pseudosasa japonica* (Siebold & Zucc. ex Steud.) Makino (Gramineae).

The aims of the present paper are 1) to provide the valid scientific names and Korea names of previously recorded species of cerambycids and hosts, 2) to clarify a checklist of the Korean cerambycids-host associations by review the previous literatures and direct investigations.

## Materials and Methods

We selectively collected immature stages of Cerambycidae in determined host plants or gathered all of stems and twigs which were infested and damaged by cerambycid larvae from 2010 to 2013. We brought the collected samples of immature stages of cerambycids and host plants to laboratory.

We stored the gathered host plants in plastic cages. Some of collected larvae were reared within their host plants in plastic cages (56 cm × 39 cm × 30 cm) or in a small petri dish (5.3 cm × 1.9 cm) in laboratory condition. Also, we labeled the information on host plant, collection date, collection locality and GPS (longitude, latitude, altitude) data on the outside of the plastic cages.

We checked the emergence of adults from each host plant every day. The specimens were determined to species level by the first author and deposited in the Insect Collection of Korea National Arboretum (Pocheon, Korea), Korea Forest Service.

For the literature review, we selected nine representative papers and books (Cho, 1959; Ko, 1969; Lee, 1987; Chung et al., 1995; Kang et al., 2002; Williams et al., 2004; Shin et al., 2007; Lim et al., 2013a, b), which considered the relationships between host plants and the Korean cerambycid species. The scientific name of host plants followed the “Korean Plant Names Index (<http://www.nature.go.kr/kpni>)” by Korea Forest Service and the Korean names of foreign plant species whose distribution in the Korean peninsula are suspicious in original literatures were cited.

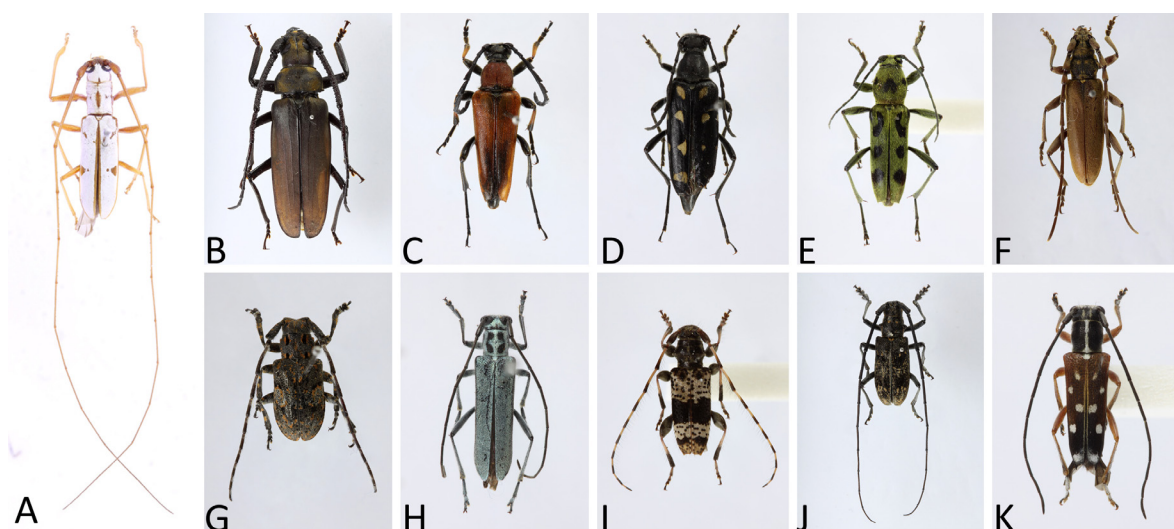
The abbreviations of subfamilies in figures and appendix 1 as follow: CE, Cerambycinae; DI, Disteniinae; LA, Lamiinae; LE, Lepturinae; PR, Prioninae; SP, Spondylidinae.

All previous scientific and Korean names of cerambycids and host plants are replaced with the current name.

## Results and Discussion

### New Host Plants of Korean Cerambycidae with a literature review of known hosts for all Korean Cerambycidae

As a result of our direct investigation of host plants and cerambycids in Korea, we found fourteen new host-cerambycid



**Fig. 2.** Cerambycids for which the new host plants have been confirmed in this study (A, *Olenecamptus formosanus* Pic; B, *Megopsis sinica* (White); C, *Corymbia rubra* (Linnaeus); D, *Leptura duodecimguttata* Fabricius; E, *Chlorophorus simillimus* (Kraatz); F, *Margites fulvidus* (Pascoe); G, *Mesosa myops* (Dalman); H, *Eumecocera impustulata* (Motschulsky); I, *Rhopaloscelis unifasciatus* Blesig; I, *Monochamus saltuarius* (Gebler); K, *Glenea relicta* (Pascoe).

associations as follows:

**Subfamily Prioninae Latreille (Korean Name: Top-ha-neul-so-a-gwa)**

1) Eight adults of *Megopis sinica* (White, 1853) (K.N.: Beo-deul-ha-neul-so) (Fig. 2B)

– *Carpinus laxiflora* (Siebold & Zucc.) Blume (Betulaceae).

**Subfamily Lepturinae Latreille (K.N.: Ggot-ha-neul-so-a-gwa)**

2) One adult of *Corymbia rubra* (Linnaeus, 1758) (K.N.: Bul-geun-san-ggot-ha-neul-so) (Fig. 2C)

– *Pinus japonica* (Thunb.) Steud. (Pinaceae).

3) Three adults of *Leptura duodecimguttata* Fabricius, 1801 (K.N.: Yeol-du-jeom-bak-i-ggot-ha-neul-so) (Fig. 2D)

– *Malus pumila* Mill. (Rosaceae).

**Subfamily Cerambycinae Latreille (K.N.: Ha-neul-so-a-gwa)**

4) One adult of *Ceresium longicorne* Pic, 1926 (K.N.: Seom-ha-neul-so) – *Quercus acuta* Thunb. (Fagaceae).

5) Two adults of *Chlorophorus simillimus* (Kraatz, 1879) (K.N.: Yeuk-jeom-bak-i-ha-neul-so) (Fig. 2E) – *Juglans regia* L. (Juglandaceae).

6) One adult of *Margites fulvidus* (Pascoe, 1858) (K.N.: Jak-eun-ha-neul-so) (Fig. 2F) – *Quercus acuta* Thunb. (Fagaceae).

**Subfamily Lamiinae Latreille (K.N.: Mok-ha-neul-so-a-gwa)**

7) Two adults of *Olenecamptus formosanus* Pic, 1914 (K.N.: Gul-pi-yeom-so-ha-neul-so) (Fig. 2A) – *Morus alba* L. (Moraceae).

8) Four adults of *Mesosa myops* (Dalman, 1817) (Fig. 2G) (K.N.: Ggae-da-si-ha-neul-so) – *Juglans mandshurica* Maxim. (Juglandaceae).

9) One adult of *Eumecocera impustulata* (Motschulsky, 1943) (K.N.: Dang-na-gui-ha-neul-so) (Fig. 2H) – *Carpinus laxiflora* (Siebold & Zucc.) Blume.

10) Seven adults of *Rhopaloscelis unifasciatus* Blessig, 1873 (K.N.: Mu-nui-gon-bong-ha-neul-so) (Fig. 2I) – *Juglans regia* L. (Juglandaceae).

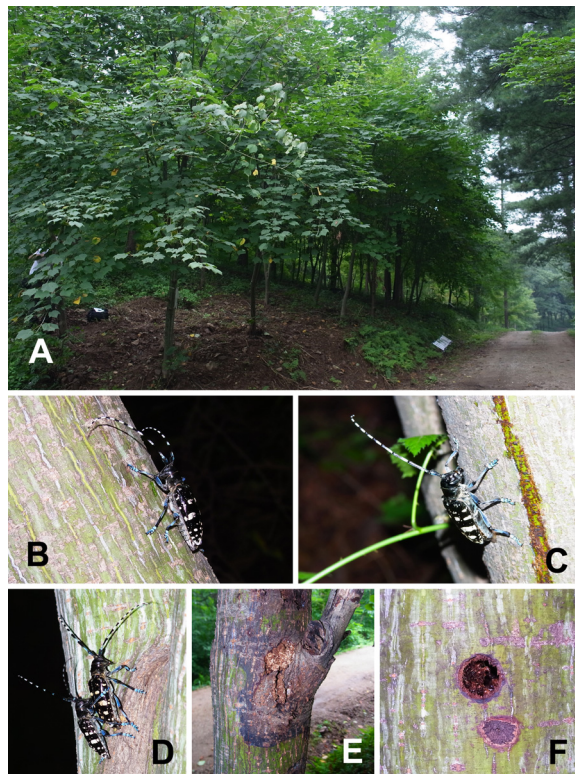
11) Fourteen adults of *Monochamus saltuarius* (Gebler, 1830) (K.N.: Buk-bang-su-yeom-ha-neul-so) (Fig. 2J) – *Picea abies* (L.) H.Karst. (Pinaceae).

12) Twenty-eight adults of *Moechotypa diphysis* (Pascoe, 1871) (K.N.: Teol-du-ggeo-bi-ha-neul-so) – *Juglans mandshurica* Maxim. (Juglandaceae), *Quercus acuta* Thunb. (Fagaceae).

13) Eight adults of *Glenea relictata* Pascoe, 1858 (K.N.: Huin-jeom-ha-neul-so) (Fig. 2K) – *Quercus acuta* Thunb. (Fagaceae).

14) More than twenty adults of *Anoplophora glabripennis* (Motschulsky, 1853) (K.N.: Yu-ri-al-rak-ha-neul-so) (Fig. 3) – *Acer tegmentosum* Maxim. (Aceraceae).

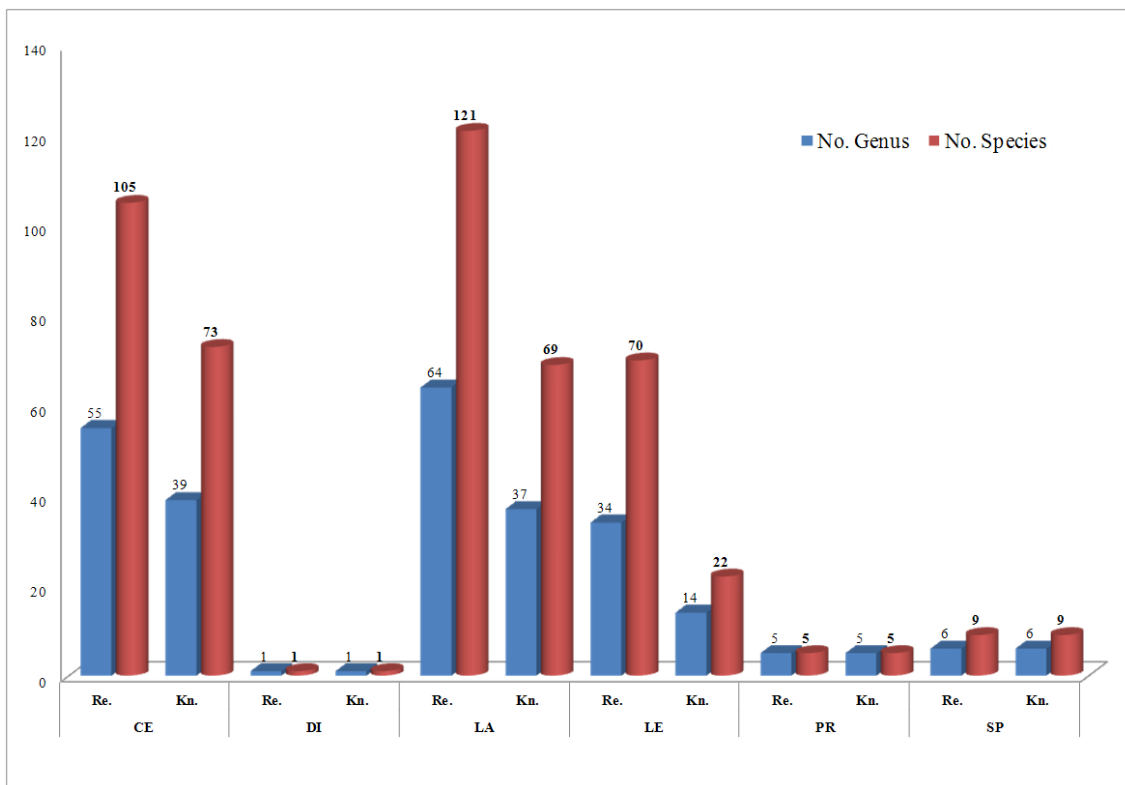
There are some advantages of rearing of immature stages of Cerambycidae in laboratory conditions. For example, many new species and new records have been found by rearing the immature samples from their hosts (Georgiev et al., 2005; Friedman et al., 2008; Lim et al., 2006, 2013a, b; Berkov and Monné, 2010), as well as useful natural enemies of cerambycids can be found by rearing (Tozlu and Kara,



**Fig. 3.** Habitats (A) and ecological pictures (B-F) of *Anoplophora glabripennis* (Motschulsky) (A, habitats, a plantation of the host plant, *Acer tegmentosum* Maxim. in Gwangneung forest, Pocheon, Korea; B, chewing barks for oviposition; C, oviposition; D, oviposition after copulation; E, exposed frasses from the galleries by larvae; F, emergence hole).

**Table 1.** The number of subfamilies, genera and species of cerambycids for each host plant (family level) (The names of the hosts are arranged in descending order of the number of species of Cerambycidae)

No.	HOST PLANT (family)		CERAMBYCIDAE		
	Scientific name	Korean name	No. subfamily	No. genus	No. species (%)
1	Ulmaceae	느릅나무과	4	33	48 (26.5)
2	Pinaceae	소나무과	6	32	46 (25.4)
3	Fagaceae	참나무과	4	38	45 (24.9)
4	Betulaceae	자작나무과	6	28	42 (23.2)
5	Rosaceae	장미과	4	28	35 (19.3)
6	Salicaceae	버드나무과	5	29	34 (18.8)
7	Juglandaceae	가래나무과	2	20	26 (14.4)
8	Moraceae	뽕나무과	4	17	24 (12.7)
9	Leguminosae	콩과	3	16	21 (11.6)
10	Vitaceae	포도과	2	8	14 (7.7)
11	Rutaceae	운향과	2	7	13 (7.2)
12	Aceraceae	단풍나무과	4	9	11 (6.1)
13	Euphorbiaceae	대극과	3	7	9 (5.0)
14	Taxodiaceae	낙우송과	4	8	8 (4.4)
15	Oleaceae	물푸레나무과	3	7	7 (3.9)
16	Cornaceae	층층나무과	3	6	7 (3.9)
17	Ebenaceae	감나무과	2	6	7 (3.9)
18	Tiliaceae	피나무과	2	6	7 (3.9)
19	Cupressaceae	측백나무과	3	6	6 (3.3)
20	Lauraceae	녹나무과	2	6	6 (3.3)
21	Araliaceae	두릅나무과	2	4	6 (3.3)
22	Scrophulariaceae	현삼과	3	5	5 (2.8)
23	Gramineae	벼과	2	3	3 (1.7)
24	Compositae	국화과	1	3	3 (1.7)
25	Actinidiaceae	다래나무과	2	2	2 (1.1)
26	Anacardiaceae	욱나무과	2	2	2 (1.1)
27	Caprifoliaceae	인동과	2	2	2 (1.1)
28	Elaeagnaceae	보리수나무과	1	2	2 (1.1)
29	Lythraceae	부처꽃과	1	2	2 (1.1)
30	Punicaceae	석류나무과	1	2	2 (1.1)
31	Rhamnaceae	갈매나무과	1	2	2 (1.1)
32	Styracaceae	매죽나무과	1	2	2 (1.1)
33	Meliaceae	멀구슬나무과	1	1	2 (1.1)
34	Platanaceae	버즘나무과	1	1	2 (1.1)
35	Cannabaceae	삼과	1	1	1 (0.6)
36	Casuarinaceae	목마황과	1	1	1 (0.6)
37	Cucurbitaceae	박과	1	1	1 (0.6)
38	Daphniphyllaceae	굴거리나무과	1	1	1 (0.6)
39	Ginkgoaceae	은행나무과	1	1	1 (0.6)
40	Malvaceae	아욱과	1	1	1 (0.6)
41	Myrtaceae	도금양과	1	1	1 (0.6)
42	Simaroubaceae	소태나무과	1	1	1 (0.6)
43	Sterculiaceae	벽오동과	1	1	1 (0.6)
44	Urticaceae	쐐기풀과	1	1	1 (0.6)
<b>Total</b>			<b>6</b>	<b>103</b>	<b>181 (100.0)</b>



**Fig. 4.** Comparison of the number of recorded cerambycid genera/species from the Korean peninsula and the number of genera/species that their host have been recorded (Re., recorded number of genera and species of cerambycids; Kn., number of genera and species that their host have been recorded) (CE, Cerambycinae; DI, Disteniinae; LA, Lamiinae; LE, Lepturinae; PR, Prioninae; SP; Spondyliinae).

2007; Sheng et al., 2012; Tindall and Fothergill, 2012).

To understand and update a checklist of the host plants of phytophagous insects are essential, fundamental and very important process. We can know the host diversity itself in nature and relationships among human, insects and hosts. Furthermore, we can apply our knowledgements on host plants to applied areas such as plant quarantine services, making policies, conservation of biodiversity and ecological researches on the phytophagous insects.

Up to now, although around 318 species of cerambycids have been recorded from Korea, most studies on host plants of them have focused on the pests of agricultural or forestry products, and there are not enough fundamental data of Korean Cerambycidae, due to the insufficiency of specialists of taxonomy and ecology on cerambycids.

In China, *A. glabripennis* (Mot.) is a pest of man-made landscapes, including windbreaks, greenbelts, ornamental plantings in urban areas, and plantations or shelter-forests, where they undergo cyclical outbreaks (Hsiao, 1982). These

landscapes are typically mono-cultures or of very limited species diversity, often composed of fast growing non-native tree species introduced from Europe and other countries (Smith *et al.*, 2009). In the present study, the Manchurian striped maple, *Acer tegmentosum* Maxim., is newly confirmed as a host plant in South Korea. The habitat consists of more than fifty *A. tegmentosum* trees (Fig. 3A) and we could find copulation of many adults, oviposition of females (Fig. 3C), frasses (Fig. 3E) and emergence holes (Fig. 3F).

In the present paper, 44 families of host plants for Korean Cerambycidae are summarized. And among them, four families (Ulmaceae, Pinaceae, Fagaceae and Betulaceae) are confirmed as main host families of known cerambycids by about 30% and more than 23% of species, respectively (Table 1). It is also confirmed that two families, Pinaceae and Betulaceae are attacked by all known subfamilies of Cerambycidae while most families except for nine families of host plants are attacked by only a few species of Cerambycidae (< 10 spp.). These data can be used to

construct a forest or a garden for attracting various species of Cerambycidae in the area.

In Korea, the host plants of three small subfamilies, Disteniinae, Prioninae and Spondylidinae, are mostly known (100%) (Fig. 4). On the other hands, we made effort to discover more hosts of genera and species of remained subfamilies, Cerambycinae, Lamiinae and Lepturinae, which most beneficial species or pests are belonging in. As a result, the host plants of 70% of recorded genera and species in Cerambycinae were known (Fig. 4) and less than 60% and less than 50% compare to the number of recorded genera and species were are known in Lamiinae and Lepturinae, respectively (Fig. 4).

Additionally, in the present paper, we summarized all recorded host plants of Korean cerambycids based on the direct investigations and previously published data.

A revised and updated checklist of host plants of Korean Cerambycidae is presented (Appendix 1).

## Acknowledgements

We thank to Dr. S. W. Lingafelter (USDA, Smithsonian Institution, National Museum of Natural History, Washington D.C., USA) and Dr. I. K. Kim (Korea National Arboretum, Pocheon, South Korea) for reviewing the present manuscript; Ms. S.Y. Park (KNA) for her help on collection immature stages of cerambycids and Ms. H.J. Lee (KNA) in her effort to find correct scientific and Korean names of host plants; Dr. F. Herard (USDA, Agricultural Research Service, European Biological Control Laboratory, Montferrier-sur-Lez, France) and Mr. H.S. Song (Seoul National University, Seoul, South Korea) for their kind cooperation. This study was supported by Forest Science & Technology Project (Project No. S121212L110140) provided by the Korea Forest Service.

## Literature Cited

- Bense, U., 1995. Longhorn beetles. Illustrated key to the Cerambycidae and Vesperidae of Europe. Druckerei Steinmeier, Nördlingen, Germany.
- Berkov, A., Monné, M.A., 2010. A new species *Neobaryssinus* Monné & Martins, and two new species of *Baryssiniella* new genus (Coleoptera: Cerambycidae), reared from trees in the Brazil nut family (Lecythidaceae). *Zootaxa*, 2538, 47-59.
- Bouchard, P., Bousquet, Y., Davies, A.E., Alonso-Zarazaga, M.A., Lawrence, J.F., Lyal, C.H.C., Newton, A.F., Reid C.A.M., Schmitt, M., Šlipiński, S.A., Smith, A.B.T., 2011. Family-group names in Coleoptera (Insecta). *Zookeys* 88, 1-972.
- Cherepanov, A.I., 1988. Cerambycidae of Northern Asia. Vol. I. Prioninae, Disteniinae, Lepturinae, Aseminae. Amerind Publishing Co. Pvt. Ltd., New Delhi.
- Cho P.S., 1959. A study on the damaged plants of longicorn beetles in Korea (Cerambycidae). *Collected papers of Shinheung College* 2, 355-386.
- Chung, Y.J., Lee, B.Y., Byun, B.H., 1995. A List of Insect Pests of Trees and Shrubs in Korea. Forestry Research Institute, Seoul, Korea.
- Danilevsky, M.L., 1992. New species of Cerambycidae (Coleoptera) from East Asia with some new records. *Annls. Hist. Nat. Mus. Nat. Hung.*, 84, 111-116.
- Danilevsky, M.L., 2013. Six new Longicorn (Coleoptera, Cerambycidae) taxa from Russia and adjacent countries. *Humanity space. International almanac*, 2(2), 28-41.
- Di Iorio, O.R., 1997. Host plants of Cerambycidae (Coleoptera) from northwest and central Argentina. *Rev. Biol. Trop.*, 44-45, 149-158.
- Friedman, A.L.L., Rittner, O., Chikatunov, V.I., 2008. Five new species of longhorn beetles (Coleoptera: Cerambycidae) in Israel. *Phytoparasitica*, 36 (3), 242-246.
- Goergiev, G., Simov, N., Stojanova, A., Doychev, D., 2005. New and interesting records of longhorn beetles (Coleoptera: Cerambycidae) in some Bulgarian mountains. *Acta Zool. Bulgar.*, 57 (2), 131-138.
- Haack, R.A., Law, K.R., Mastro, V.C., Ossenbruggen, H.S., Raimo, B.J., 1997. New York's battle with the Asian long-horned beetle. *Journal of Forestry*, 95 (12), 11-15.
- Haack, R.A., Bauer, L.S., Gao, R.T., McCarthy, J.J., Miller D.L., Petrice, T.R., Poland, T.M., 2006. *Anoplophora glabripennis* within-tree distribution, seasonal development, and host suitability in China and Chicago. *Gt. Lakes Entomol.*, 39 (3, 4), 169-183.
- Halperin J., Holzschuh, C., 1993. Host-Plants of Israeli Cerambycidae (Coleoptera), with New Records. *Phytoparasitica*, 21 (1), 23-37.
- Hsiao, K.J., 1982. Forest entomology in China: A general review. *Crop Prot.*, 1: 359-367.
- Hua, L.Z., 2002. List of Chinese Insects. Vol. II. Zhong-shan University, Guangzhou.
- Kang E.Y., Oh, H.Y., Oh, H.Y., 2002. A larval hostplant list of the Cerambycidae (Coleoptera) in South Korea. *Lucanus*, 3, 1-5.
- Ko, J.H., 1969. A List of Insect Pests of Trees and Shrubs in Korea. Forestry Research Institute, Seoul, Korea.

- Kojima, K., Nakamura, S., 2011. Food plants of cerambycid beetles (Cerambycidae, Coleoptera) in Japan (revised and enlarged edition). Hiba Society of Natural History. Hiroshima, Japan.
- Kolbe, H.J., 1886. Beiträge zur Kenntniss der Coleopteren-Fauna Koreas, bearbeitet auf Grund der von Herrn Dr. C. Gottsche während der Jahre 1883 und 1884 in Korea veranstalteten Sammlung; nebst Bemerkungen über die zoogeographischen Verhältnisse dieses Faunengebietes und Untersuchungen über einen Sinnesapparat in Gaumen von *Misolampidius morio*. Archiv für Naturgeschichte, 52 (1): 139-240.
- Lee, S.M., 1987. The Longicorn Beetles of Korean Peninsula. National Science Museum, Seoul.
- Lim, J., Lyu, D., Choi, G.S., Jeong, Y.J., Shin, S.C., Lee, S., 2006. A taxonomic note on *Sclerodermus harmandi*, ectoparasite of stem and wood boring insect larvae (Hymenoptera: Chrysoidea: Bethyloidea) in South Korea. J. Asia-Pacific Entomol., 9 (2), 115-119.
- Lim, J., Han, Y., Lee, B., Oh, H., Lyu, D., 2012. A new species of *Clytus* Laicharting (Coleoptera: Cerambycidae) from Korea with a key to Korean species. Entomol. Res., 42, 192-195.
- Lim, J., Kim, I.K., Lee, Y.S., Kim, K.M., Kim, C.H., Lim, J.S., Park, S.Y., Lee, B.W., 2013a. Three species of *Phymatodes* Mulsant (Coleoptera: Cerambycidae) new to South Korea that hosted on *Vitis vinifera* Linnaeus (Vitaceae). Entomol. Res., 43, 34-39.
- Lim, J., Lim, J.S., Lee, B.W., 2013b. A new species of *Eupogoniopsis* and new record of *Eupromus ruber* (Dalman) (Coleoptera: Cerambycidae) from South Korea. Entomol. Res., 43, 358-364.
- Linsley, E.G., Chemsak, J.A., 1997. The Cerambycidae of North America, Part VIII: Bibliography, Index, and Host Plant Index. University of California Press. London, England.
- MacRae, T.C., Bezark, L.G., Swift, I., 2012. Notes on distribution and host plants of Cerambycidae (Coleoptera) from southern Mexico. Pan-Pac. Entomol., 88 (2), 173-187.
- Oh, S.H., 2013. Two additional species of the subfamily Cerambycinae (Coleoptera, Cerambycidae) from the Korean Peninsula. Elytra, Tokyo, New Series, 3(1), 161-163.
- Oh, S.H., Lee, S.H., 2013. Four species of the subfamily Lamiinae (Coleoptera, Cerambycidae) newly recorded from Korea. Elytra, Tokyo, New Series, 3(2): 301-304.
- Paek, M.K., Hwang, J.M., Jung, K.S., Kim, T.W., Kim, M.C., Lee, Y.J., Cho, Y.B., Park, S.W., Lee, H.S., Ku, D.S., Jeong, J.C., Kim, K.G., Choi, D.S., Shin, E.H., Hwang, J.H., Lee, J.S., Kim, S.S., Bae, Y.S., 2010. Checklist of Korean insects. <Nature & Ecology> Academic Series 2, Seoul, Korea.
- Sama, G., 2002. Atlas of the Cerambycidae of Europe and the Mediterranean Area. Vol. I. Northern, Western, Central and Eastern Europe British Isles and Continental Europe from France (excl. Corsica) to Scandinavia and Urals. Nakladatelství Kabourek, Zlín, Russia.
- Sama, G., Buse, J., Orbach, E., Friedman, A.L.L., Rittner, O., Chikatunov, V., 2010. A new catalogue of the Cerambycidae (Coleoptera) of Israel with notes on their distribution and host plants. Munis Ent. Zool., 5 (1), 1-51.
- Sheng, M.L., Zhao, R.X., Sun, S.P., 2012. A new species of *Xorides* Latreille (Hymenoptera, Ichneumonidae, Xoridinae) parasitizing *Pterolophia alternata* (Coleoptera, Cerambycidae) in *Robinia pseudoacacia*. Zookeys, 246, 39-49.
- Shin, S.C., Choi, G.S., Chung, Y.J., Lee, S.G., Kim, C.S., 2007. A new illustrated guide to Korean Insect Pests of Trees and Shrubs. Forestry Research Institute, Seoul, Korea.
- Smith, M.T., Turgeon, J.J., Groot, P.D., Gasman, B., 2009. Asian longhorned beetle, *Anoplophora glabripennis* (Motschulsky): Lessons learned and opportunities to improve the process of eradication and management. Am. Entomol., 55 (1): 21-25.
- Tindall, K.V., Fothergill, K., 2012. *Dolichomitus irritator* (Hymenoptera: Ichneumonidae): a new parasite of *Dectes texanus* (Coleoptera: Cerambycidae) in soybeans. Fla. Entomol., 95 (1), 238-240.
- Tozlu, G., Kara, K., 2007. The first host record for *Zeuxia zejvana* Kolomiets, 1971 (Diptera: Tachinidae) from Turkey. Turk. J. Zool., 31, 357-358.
- Webb, G.A., 1987. Laval host plants of Cerambycidae (Coleoptera) held in some Australian insect collections. Forestry Commission of New South Wales. 1-19.
- Williams, D.W., Lee, H.P., Kim, I.K., 2004. Distribution and abundance of *Anoplophora glabripennis* (Coleoptera: Cerambycidae) in natural Acer stands in South Korea. Environ. Entomol., 33 (3), 540-545.



Appendix 1. A checklist of host plants of Korean Cerambycidae

CERAMBYCIDAE			HOST PLANT			
Subf. <sup>1</sup>	Scientific name	Korean name	Family	Scientific name	Korean name	REF. <sup>2</sup>
CE	<i>Amarysius altajensis</i> (Laxmann)	무늬소주홍하늘소	단풍나무과(Aceraceae)	<i>Acer palmatum</i> Thunb.	단풍나무	E
			물푸레나무과(Oleaceae)	<i>Fraxinus rhynchophylla</i> Hance	물푸레나무	E
			참나무과(Fagaceae)	<i>Quercus acutissima</i> Carruth.	상수리나무	A; B; D
	<i>Amarysius sanguinipennis</i> (Blessig)	소주홍하늘소	포도과(Vitaceae)	<i>Vitis vinifera</i> L.	포도	E
			녹나무과(Lauraceae)	<i>Lindera obtusiloba</i> Blume	생강나무	A; B; D
			느릅나무과(Ulmaceae)	<i>Ulmus americana</i> L.	미국느릅나무	A
			단풍나무과(Aceraceae)	<i>Acer pictum</i> subsp. <i>mono</i> (Maxim.) Ohashi	고로쇠나무	B
				<i>Acer pictum</i> Thunb.	털고로쇠나무	A
				<i>Acer saccharinum</i> L.	은단풍	A; B; D
	<i>Aromia bungii</i> (Faldermann)	빛나무사향하늘소	포도과(Vitaceae)	<i>Vitis vinifera</i> L.	포도	E
			버드나무과(Salicaceae)	<i>Salix</i> spp.	버드나무류	A; B; D
			장미과(Rosaceae)	<i>Prunus grayana</i> Maxim.	일본귀룽나무	A
				<i>Prunus japonica</i> f. <i>rufinervis</i> (Nakai) T. B. Lee	뜰매화	A
				<i>Prunus mume</i> Siebold & Zucc.	매실나무	A
				<i>Prunus padus</i> L.	귀룽나무	B; D
			<i>Prunus persica</i> (L.) Batsch	복사나무	A	
			<i>Prunus salicina</i> Lindl.	자두나무	E	
			<i>Prunus</i> spp.	빛나무류	B; C	
			<i>Prunus yedoensis</i> Matsum.	왕벚나무	A	
<i>Aromia moschata</i> (Linnaeus)	사향하늘소	버드나무과(Salicaceae)	<i>Populus koreana</i> Rehder	물황칠나무	A	
			<i>Populus maximowiczii</i> A. Henry	황칠나무	B; D	
			<i>Populus</i> spp.	사시나무류	B	
			<i>Salix purpurea</i> var. <i>smithiana</i> Trautv.	당키버들	A	
			<i>Salix</i> spp.	버드나무류	B; D	
		자작나무과(Betulaceae)	<i>Betula platyphylla</i> var. <i>japonica</i> (Miq.) H. Hara	자작나무	B; D	
			<i>Betula</i> spp.	자작나무류	A	
		장미과(Rosaceae)	<i>Prunus</i> spp.	빛나무류	C	
		갈매나무과(Rhamnaceae)	<i>Zizyphus jujuba</i> Mill.	뫼뚝나무	B; D	
			<i>Zizyphus jujuba</i> var. <i>inermis</i> (Bunge) Rehder	대추나무	D	
<i>Asias halodendri</i> (Pallas)	먹주홍하늘소	버드나무과(Salicaceae)	<i>Zizyphus</i> spp.	대추나무류	A	
			<i>Salix</i> spp.	버드나무류	A; B; D	
		보리수나무과(Elaeagnaceae)	<i>Elaeagnus</i> spp.	보리수나무류	B; D	
			<i>Elaeagnus umbellata</i> Thunb.	보리수나무	A	
		인동과(Caprifoliaceae)	<i>Lonicera japonica</i> Thunb.	인동덩굴	B; D	
			<i>Lonicera</i> spp.	인동류	A	
		콩과(Leguminosae)	<i>Caragana</i> spp.	곰담초류	A	
		포도과(Vitaceae)	<i>Vitis vinifera</i> L.	포도	A; B; D; E	
		낙우송과(Taxodiaceae)	<i>Cryptomeria japonica</i> (L.f.) D. Don	삼나무	A; B; D	
		소나무과(Pinaceae)	<i>Abies holophylla</i> Maxim.	전나무	C	
<i>Brachyelytus singularis</i> Kraatz	홍호랑하늘소		<i>Abies</i> spp.	전나무류	A	
			<i>Pinus</i> spp.	소나무류	B	
		장미과(Rosaceae)	<i>Prunus</i> spp.	빛나무류	B	
		측백나무과(Cupressaceae)	<i>Chamaecyparis obtusa</i> (Siebold & Zucc.) Endl.	편백	A; B; D	
			<i>Juniperus chinensis</i> L.	향나무	D; E	
			<i>Thuja orientalis</i> L.	측백나무	E	
			<i>Thujopsis dolabrata</i> (L.f.) Siebold & Zucc.	나한백	D	
		버드나무과(Salicaceae)	<i>Salix</i> spp.	버드나무류	B; D	
		소나무과(Pinaceae)	<i>Picea jezoensis</i> (Siebold & Zucc.) Carriere	가문비나무	B; D	
		자작나무과(Betulaceae)	<i>Alnus hirsuta</i> f. <i>glabra</i> T.B. Lee	민물오리나무	B; D	
<i>Callidiellum rufipenne</i> (Motschulsky)	애청삼나무하늘소		<i>Carpinus</i> spp.	서어나무류	A; B; D	
		참나무과(Fagaceae)	<i>Castanea</i> spp.	밤나무류	A; B; D	
			<i>Fagus engleriana</i> Seemen ex Diels	너도밤나무	D	
			<i>Fagus</i> spp.	너도밤나무류	A; B	
			<i>Quercus</i> spp.	참나무류	A; B; D	
		느릅나무과(Ulmaceae)	<i>Zelkova serrata</i> (Thunb.) Makino	느티나무	E	
		감나무과(Ebenaceae)	<i>Diospyros kaki</i> Thunb.	감나무	E	
		대극과(Euphorbiaceae)	<i>Mallotus japonicus</i> (Thunb.) Muell. Arg.	예덕나무	E	
		참나무과(Fagaceae)	<i>Quercus acuta</i> Thunb.	불가시나무	<b>New record</b>	
		<i>Chloridolum japonicum</i> (Harold)	참풀색하늘소	참나무과(Fagaceae)	<i>Quercus acutissima</i> Carruth.	상수리나무
	<i>Quercus</i> spp.			참나무류	C	
<i>Chloridolum sieversi</i> (Ganglbauer)	홍가슴풀색하늘소	가래나무과(Juglandaceae)	<i>Juglans regia</i> L.	호두나무	E	
		참나무과(Fagaceae)	<i>Quercus acutissima</i> Carruth.	상수리나무	A; B; D	

CERAMBYCIDAE			HOST PLANT			REF. <sup>2</sup>
Subf. <sup>1</sup>	Scientific name	Korean name	Family	Scientific name	Korean name	
<i>Chloridolum thaliodes</i> Bates		큰풀색하늘소	느릅나무과(Ulmaceae)	<i>Ulmus</i> spp.	느릅나무류	B; D
			버드나무과(Salicaceae)	<i>Populus maximowiczii</i> A. Henry	황철나무	B; D
<i>Chloridolum viride</i> (Thomson)		갈매나무풀색하늘소	참나무과(Fagaceae)	<i>Salix</i> spp.	버드나무류	A; B; D
			벼과(Gramineae)	<i>Castanea crenata</i> Siebold & Zucc.	밤나무	E
<i>Chlorophorus annularis</i> (Fabricius)		대벌하늘소	운향과(Rutaceae)	<i>Phyllostachys</i> spp.	왕대류	A; B
			자작나무과(Betulaceae)	<i>Citrus</i> spp.	귤류	B
<i>Chlorophorus diadema</i> (Motschulsky)		범하늘소	자작나무과(Betulaceae)	<i>Betula</i> spp.	자작나무류	A
			장미과(Rosaceae)	<i>Albizia</i> spp.	자귀나무류	C; D
<i>Chlorophorus japonicus</i> (Chevrolat)	가시벌하늘소	가시벌하늘소	포도과(Vitaceae)	<i>Vitis vinifera</i> L.	포도	B
			콩과(Leguminosae)	<i>Betula</i> spp.	자작나무류	B
<i>Chlorophorus motschulskyi</i> (Ganglbauer)	우리벌하늘소	우리벌하늘소	장미과(Rosaceae)	<i>Malus pumila</i> Mill.	사과나무	B; D
			가시벌하늘소	<i>Prunus cerasus</i> L.	구주벚나무	A
<i>Chlorophorus muscosus</i> (Bates)	홀쭉벌하늘소	홀쭉벌하늘소	콩과(Leguminosae)	<i>Prunus</i> spp.	벚나무류	B
			감나무과(Ebenaceae)	<i>Robinia pseudoacacia</i> L.	아까시나무	B; A
<i>Chlorophorus muscosus</i> (Bates)	홀쭉벌하늘소	홀쭉벌하늘소	느릅나무과(Ulmaceae)	<i>Diospyros kaki</i> Thunb.	감나무	D
			참나무과(Fagaceae)	<i>Zelkova serrata</i> (Thunb.) Makino	느티나무	E
<i>Chlorophorus quinquefasciatus</i> (Castelnau et Gory)	네줄벌하늘소	네줄벌하늘소	참나무과(Fagaceae)	<i>Quercus acutissima</i> Carruth.	상수리나무	E
			버드나무과(Salicaceae)	<i>Populus koreana</i> Rehder	물향철나무	A
<i>Chlorophorus simillimus</i> (Kraatz)	육점박이벌하늘소	육점박이벌하늘소	버드나무과(Salicaceae)	<i>Populus maximowiczii</i> A. Henry	황철나무	B; D
			자작나무과(Betulaceae)	<i>Salix</i> spp.	버드나무류	A; B; D
<i>Cyrtoclytus capra</i> (Gemar)	별호랑하늘소	별호랑하늘소	가래나무과(Juglandaceae)	<i>Betula</i> spp.	자작나무류	A; B; D
			가래나무과(Juglandaceae)	<i>Platycarya strobilacea</i> Siebold & Zucc.	굴피나무	E
<i>Cyrtoclytus caproides</i> Bates	-	-	감나무과(Ebenaceae)	<i>Diospyros kaki</i> Thunb.	감나무	E
			자작나무과(Betulaceae)	<i>Zelkova serrata</i> (Thunb.) Makino	느티나무	E
<i>Cyrtoclytus monticallus</i> Komiya	넓은호호랑하늘소	넓은호호랑하늘소	단풍나무과(Aceraceae)	<i>Acer palmatum</i> Thunb.	단풍나무	E
			느릅나무과(Ulmaceae)	<i>Fraxinus rhyrachophylla</i> Hance	물푸레나무	E
<i>Demonax transilis</i> Bates	가시수염벌하늘소	가시수염벌하늘소	자작나무과(Betulaceae)	<i>Carpinus turczaninowii</i> Hance	소사나무	E
			낙우송과(Taxodiaceae)	<i>Quercus acutissima</i> Carruth.	상수리나무	E
<i>Dere thoracica</i> White	반디하늘소	반디하늘소	층층나무과(Cornaceae)	<i>Cornus controversa</i> Hemsl.	층층나무	E
			층층나무과(Cupressaceae)	<i>Albizia julibrissin</i> Durazz.	자귀나무	E
<i>Glaphyra kojimai</i> (Matsushita)	산꼬마벌하늘소	산꼬마벌하늘소	콩과(Leguminosae)	<i>Pueraria lobata</i> (Willd.) Ohwi	췌	E
			층층나무과(Cornaceae)	<i>Robinia pseudoacacia</i> L.	아까시나무	E
<i>Glaphyra nitida</i> Obika	용정하늘소	용정하늘소	가래나무과(Juglandaceae)	<i>Juglans regia</i> L.	호두나무	New record
			느릅나무과(Ulmaceae)	<i>Zelkova serrata</i> (Thunb.) Makino	느티나무	E
<i>Leptepania japonica</i> (Hayashi)	홍줄하늘소	홍줄하늘소	단풍나무과(Aceraceae)	<i>Acer palmatum</i> Thunb.	단풍나무	E
			참나무과(Fagaceae)	<i>Fraxinus rhyrachophylla</i> Hance	물푸레나무	E
<i>Leptoxenus ibidiformis</i> Bates	작은하늘소	작은하늘소	자작나무과(Betulaceae)	<i>Carpinus turczaninowii</i> Hance	소사나무	E
			낙우송과(Taxodiaceae)	<i>Quercus acutissima</i> Carruth.	상수리나무	E
<i>Margites fulvidus</i> (Pascoe)	작은하늘소	작은하늘소	층층나무과(Cornaceae)	<i>Cornus controversa</i> Hemsl.	층층나무	E
			가래나무과(Juglandaceae)	<i>Albizia julibrissin</i> Durazz.	자귀나무	E
<i>Margites fulvidus</i> (Pascoe)	작은하늘소	작은하늘소	가래나무과(Juglandaceae)	<i>Pueraria lobata</i> (Willd.) Ohwi	췌	E
			가래나무과(Juglandaceae)	<i>Robinia pseudoacacia</i> L.	아까시나무	E
<i>Margites fulvidus</i> (Pascoe)	작은하늘소	작은하늘소	가래나무과(Juglandaceae)	<i>Juglans regia</i> L.	호두나무	E
			가래나무과(Juglandaceae)	<i>Zelkova serrata</i> (Thunb.) Makino	느티나무	E
<i>Margites fulvidus</i> (Pascoe)	작은하늘소	작은하늘소	가래나무과(Juglandaceae)	<i>Alnus hirsuta</i> f. <i>glabra</i> T. B. Lee	민물오리나무	B
			가래나무과(Juglandaceae)	<i>Alnus sibirica</i> Fisch. ex Turcz.	물오리나무	A; D
<i>Margites fulvidus</i> (Pascoe)	작은하늘소	작은하늘소	자작나무과(Betulaceae)	<i>Betula costata</i> Trautv.	거제수나무	A; B; D
			자작나무과(Betulaceae)	<i>Diospyros kaki</i> Thunb.	감나무	A; B
<i>Margites fulvidus</i> (Pascoe)	작은하늘소	작은하늘소	자작나무과(Betulaceae)	<i>Betula platyphylla</i> var. <i>japonica</i> (Miq.) H. Hara	자작나무	A; B
			자작나무과(Betulaceae)	<i>Celtis jessoensis</i> Koidz.	풍게나무	E
<i>Margites fulvidus</i> (Pascoe)	작은하늘소	작은하늘소	낙우송과(Taxodiaceae)	<i>Cryptomeria japonica</i> (L.f.) D. Don	삼나무	D
			층층나무과(Cupressaceae)	<i>Chamaecyparis obtusa</i> (Siebold & Zucc.) Endl.	편백	D
<i>Margites fulvidus</i> (Pascoe)	작은하늘소	작은하늘소	보리수나무과(Elaeagnaceae)	<i>Elaeagnus</i> spp.	보리수나무류	B; D
			보리수나무과(Elaeagnaceae)	<i>Elaeagnus umbellata</i> Thunb.	보리수나무	A
<i>Margites fulvidus</i> (Pascoe)	작은하늘소	작은하늘소	장미과(Rosaceae)	<i>Photinia glabra</i> (Thunb.) Maxim.	홍가시나무	A
			장미과(Rosaceae)	<i>Prunus japonica</i> f. <i>rufinervis</i> (Nakai) T. B. Lee	틀매화	A
<i>Margites fulvidus</i> (Pascoe)	작은하늘소	작은하늘소	장미과(Rosaceae)	<i>Prunus</i> spp.	벚나무속	B; D
			참나무과(Fagaceae)	<i>Quercus acuta</i> Thunb.	붉가시나무	A; B; D
<i>Margites fulvidus</i> (Pascoe)	작은하늘소	작은하늘소	참나무과(Fagaceae)	<i>Quercus aliena</i> Blume	갈참나무	B; D
			참나무과(Fagaceae)	<i>Albizia julibrissin</i> Durazz.	자귀나무	A; B; D; E
<i>Margites fulvidus</i> (Pascoe)	작은하늘소	작은하늘소	콩과(Leguminosae)	<i>Cornus controversa</i> Hemsl.	층층나무	E
			층층나무과(Cornaceae)	<i>Celtis jessoensis</i> Koidz.	풍게나무	E
<i>Margites fulvidus</i> (Pascoe)	작은하늘소	작은하늘소	느릅나무과(Ulmaceae)	<i>Castanea</i> spp.	밤나무속	C
			참나무과(Fagaceae)	<i>Lindera obtusiloba</i> Blume	생강나무	E
<i>Margites fulvidus</i> (Pascoe)	작은하늘소	작은하늘소	녹나무과(Lauraceae)	<i>Juglans</i> spp.	가래나무류	D
			가래나무과(Juglandaceae)	<i>Platycarya strobilacea</i> Siebold & Zucc.	굴피나무	E
<i>Margites fulvidus</i> (Pascoe)	작은하늘소	작은하늘소	가래나무과(Juglandaceae)	<i>Zelkova serrata</i> (Thunb.) Makino	느티나무	E
			느릅나무과(Ulmaceae)			

CERAMBYCIDAE			HOST PLANT		REF. <sup>2</sup>	
Subf. <sup>1</sup>	Scientific name	Korean name	Family	Scientific name		Korean name
<i>Massicus raddei</i> (Blessig)	하늘소	장미과(Rosaceae)		<i>Prunus salicina</i> Lindl.	자두나무	E
		참나무과(Fagaceae)		<i>Castanea crenata</i> Siebold & Zucc.	밤나무	A; D
				<i>Quercus acuta</i> Thunb.	붉가시나무	<b>New record</b>
		콩과(Leguminosae)		<i>Robinia pseudoacacia</i> L.	아까시나무	A; D
		현삼과(Scrophulariaceae)		<i>Paulownia tomentosa</i> (Thunb.) Steud.	참오동나무	A; D
		뽕나무과(Moraceae)		<i>Morus</i> spp.	뽕나무류	A; B
		참나무과(Fagaceae)		<i>Castanea bungeana</i> Blume	약밤나무	A
				<i>Castanea crenata</i> Siebold & Zucc.	밤나무	A; B; D
				<i>Castanopsis cuspidata</i> (Thunb.) Schottky	모밀잣밤나무	A
				<i>Castanopsis sieboldii</i> (Makino) Hatus.	구실잣밤나무	D
				<i>Quercus acuta</i> Thunb.	붉가시나무	D
				<i>Quercus acutissima</i> Carruth.	상수리나무	A; B; D
				<i>Quercus dentata</i> Thunb.	떡갈나무	B; D
				<i>Quercus serrata</i> Thunb. ex Murray	졸참나무	A; B; D
		<i>Molorchus minor</i> (Linnaeus)	꼬마벌하늘소	현삼과(Scrophulariaceae)		<i>Paulownia</i> spp.
소나무과(Pinaceae)				<i>Abies</i> spp.	전나무류	A; D
				<i>Picea jezoensis</i> (Siebold & Zucc.) Carriere	가문비나무	B; D
<i>Opyprrhidium cinnabarinum</i> (Blessig)	주홍삼나무하늘소	느릅나무과(Ulmaceae)		<i>Ulmus davidiana</i> var. <i>japonica</i> (Rehder) Nakai	느릅나무	E
		참나무과(Fagaceae)		<i>Quercus</i> spp.	참나무류	A; B; D
<i>Palaeocallidium chlorizans</i> (Solsky)	청삼나무하늘소	느릅나무과(Ulmaceae)		<i>Ulmus</i> spp.	느릅나무류	B; D
		소나무과(Pinaceae)		<i>Abies</i> spp.	전나무류	A; B; D
<i>Perrisus fairmairei</i> Gressitt	작은호랑하늘소	자작나무과(Betulaceae)		<i>Alnus hirsuta</i> f. <i>glabra</i> T.B. Lee	민물오리나무	B; D
		가래나무과(Juglandaceae)		<i>Juglans regia</i> L.	호두나무	E
		느릅나무과(Ulmaceae)		<i>Zelkova serrata</i> (Thunb.) Makino	느티나무	E
<i>Phymatodes albicinctus</i> Bates	띠하늘소	장미과(Rosaceae)		<i>Malus pumila</i> Mill.	사과나무	B; D
				<i>Prunus cerasus</i> L.	구주벚나무	A
				<i>Prunus</i> spp.	벚나무류	B;
		포도과(Vitaceae)		<i>Vitis coignetiae</i> Pulliat ex Planch.	머루	E
				<i>Vitis</i> spp.	포도류	C
				<i>Vitis vinifera</i> L.	포도	A; B; D
				<i>Vitis coignetiae</i> Pulliat ex Planch.	머루	E
				<i>Vitis vinifera</i> L.	포도	H
				<i>Actinidia arguta</i> (Siebold & Zucc.) Planch. ex Miq.	다래	E
				<i>Vitis coignetiae</i> Pulliat ex Planch.	머루	E
<i>Phymatodes infasciatus</i> (Pic)	밤띠하늘소	포도과(Vitaceae)		<i>Vitis vinifera</i> L.	포도	A; B; D; E
				<i>Vitis coignetiae</i> Pulliat ex Planch.	머루	E
<i>Phymatodes jiangi</i> Wang et Zheng	갈색민띠하늘소	포도과(Vitaceae)		<i>Vitis vinifera</i> L.	포도	H
<i>Phymatodes maaki</i> (Kraatz)	홍띠하늘소	다래나무과(Actinidiaceae)		<i>Actinidia arguta</i> (Siebold & Zucc.) Planch. ex Miq.	다래	E
<i>Phymatodes murzini</i> Danilevsky	두줄민띠하늘소	포도과(Vitaceae)		<i>Vitis vinifera</i> L.	포도	H
				<i>Vitis vinifera</i> L.	포도	A; B; D; E
<i>Phymatodes zemlinae</i> Pavilstshikov et Anuffriev	청날개띠하늘소	포도과(Vitaceae)		<i>Vitis vinifera</i> L.	포도	H
<i>Plagionotus christophi</i> (Kraatz)	소벌하늘소	참나무과(Fagaceae)		<i>Quercus acutissima</i> Carruth.	상수리나무	E
				<i>Quercus</i> spp.	참나무류	A; B; D
<i>Plagionotus pulcher</i> (Blessig)	작은소벌하늘소	느릅나무과(Ulmaceae)		<i>Ulmus davidiana</i> var. <i>japonica</i> (Rehder) Nakai	느릅나무	B; D
				<i>Ulmus</i> spp.	느릅나무류	A
		뽕나무과(Moraceae)		<i>Morus</i> spp.	뽕나무류	B; D
		자작나무과(Betulaceae)		<i>Alnus hirsuta</i> f. <i>glabra</i> T.B. Lee	민물오리나무	A; B; D
		참나무과(Fagaceae)		<i>Quercus</i> spp.	참나무류	A; B; D
<i>Polyzonus fasciatus</i> (Fabricius)	노랑띠하늘소	버드나무과(Salicaceae)		<i>Salix</i> spp.	버드나무류	A; B; D
<i>Pronocera brevicollis</i> (Gebler)	홍가슴삼나무하늘소	소나무과(Pinaceae)		<i>Larix olgensis</i> var. <i>amurensis</i> (Kolesn.) Kitag.	민주잎갈나무	D
				<i>Larix olgensis</i> var. <i>koreana</i> (Nakai) Nakai	잎갈나무	A; B
<i>Pronocera brevicollis</i> (Gebler)	홍가슴삼나무하늘소	소나무과(Pinaceae)		<i>Pinus</i> spp.	소나무류	A; B; D
<i>Purpuricenus lituratus</i> Ganglbauer	모자주홍하늘소	장미과(Rosaceae)		<i>Malus pumila</i> Mill.	사과나무	B; D
				<i>Malus</i> spp.	사과나무류	A
				<i>Pyrus pyrifolia</i> var. <i>culta</i> (Makino) Nakai	배나무	B; D
				<i>Pyrus</i> spp.	배나무류	A
		참나무과(Fagaceae)		<i>Quercus acutissima</i> Carruth.	상수리나무	E
		포도과(Vitaceae)		<i>Vitis vinifera</i> L.	포도	E
		<i>Purpuricenus temminckii</i> (Guérin-Méneville)	주홍하늘소	갈매나무과(Rhamnaceae)		<i>Zizyphus jujuba</i> Mill.
				<i>Zizyphus jujuba</i> var. <i>inermis</i> (Bunge) Rehder	대추나무	A; D
벼과(Gramineae)				<i>Phyllostachys bambusoides</i> Sieb. et Zucc.	왕대	E
				<i>Phyllostachys</i> spp.	왕대류	A; B
				<i>Sasa</i> spp.	조릿대류	B
장미과(Rosaceae)				<i>Pyrus pyrifolia</i> var. <i>culta</i> (Makino) Nakai	배나무	B; D
콩과(Leguminosae)				<i>Albizia</i> spp.	자귀나무류	D

CERAMBYCIDAE			HOST PLANT			REF. <sup>2</sup>			
Subf. <sup>1</sup>	Scientific name	Korean name	Family	Scientific name	Korean name				
	<i>Pyrestes haematicus</i> Pascoe	굵은수염하늘소	녹나무과(Lauraceae)	<i>Cinnamomum camphora</i> (L.) J. Presl	녹나무	D			
				<i>Machilus</i> spp.	후박나무류	A			
	<i>Rhaphuma diminuta</i> (Bates)	꼬마긴다리범하늘소	콩과(Leguminosae)	<i>Pueraria lobata</i> (Willd.) Ohwi	쑥	A; B;			
			느릅나무과(Ulmaceae)	<i>Celtis sinensis</i> Pers.	팽나무	E			
			대극과(Euphorbiaceae)	<i>Zelkova serrata</i> (Thunb.) Makino	느티나무	E			
			층층나무과(Cornaceae)	<i>Mallotus japonicus</i> (Thunb.) Muell. Arg.	예덕나무	E			
			느릅나무과(Ulmaceae)	<i>Cornus controversa</i> Hemsl.	층층나무	E			
	<i>Rhaphuma gracilipes</i> (Faldermann)	긴다리범하늘소	느릅나무과(Ulmaceae)	<i>Celtis sinensis</i> Pers.	팽나무	E			
				<i>Zelkova serrata</i> (Thunb.) Makino	느티나무	E			
			소나무과(Pinaceae)	<i>Abies nephrolepis</i> (Trautv.) Maxim.	분비나무	A; B; D			
				<i>Larix olgensis</i> var. <i>amurensis</i> (Kolesn.) Kitag.	만주잎갈나무	D			
				<i>Larix olgensis</i> var. <i>koreana</i> (Nakai) Nakai	일갈나무	A; B			
			층층나무과(Cornaceae)	<i>Cornus controversa</i> Hemsl.	층층나무	E			
			가래나무과(Juglandaceae)	<i>Juglans</i> spp.	가래나무류	A; B; D			
			자작나무과(Betulaceae)	<i>Alnus sibirica</i> Fisch. ex Turcz.	물오리나무	A; B; D			
			참나무과(Fagaceae)	<i>Quercus</i> spp.	참나무류	A; B; D			
			뽕나무과(Moraceae)	<i>Ficus retusa</i> L.	대만고무	A			
	<i>Rhytidodera integra</i> Kolbe	남방작은하늘소	가래나무과(Juglandaceae)	<i>Juglans regia</i> Dode	호두나무	B; D			
				<i>Juglans</i> spp.	가래나무류	A			
			느릅나무과(Ulmaceae)	<i>Ulmus</i> spp.	느릅나무류	B; D			
			버드나무과(Salicaceae)	<i>Salix</i> spp.	버드나무류	A; B; D			
			참나무과(Fagaceae)	<i>Fagus</i> spp.	너도밤나무류	A			
			CE	<i>Schwarzerium quadricolle</i> (Bates)	초록하늘소	단풍나무과(Aceraceae)	<i>Acer palmatum</i> Thunb.	단풍나무	A; B
							<i>Acer palmatum</i> var. <i>matsumurae</i> (Koidz.) Makino	뜰단풍	A
							<i>Acer pictum</i> subsp. <i>mono</i> (Maxim.) Ohashi	고로쇠나무	B; D
							<i>Acer pictum</i> var. <i>truncatum</i> (Bunge) C. S. Chang	만주고로쇠	A; B
							<i>Acer pseudosieboldianum</i> (Pax) Kom.	당단풍나무	B; D
	<i>Acer</i> spp.	단풍나무류				B; D			
자작나무과(Betulaceae)	<i>Betula schmidtii</i> Regel	박달나무				A			
장미과(Rosaceae)	<i>Malus pumila</i> Mill.	사과나무				D			
참나무과(Fagaceae)	<i>Castanea crenata</i> Siebold & Zucc.	밤나무				A; B			
낙우송과(Taxodiaceae)	<i>Cryptomeria japonica</i> (L.f.) D. Don	삼나무				D; G			
	<i>Semanotus bifasciatus</i> (Motschulsky)	향나무하늘소	측백나무과(Cupressaceae)	<i>Chamaecyparis obtusa</i> (Siebold & Zucc.) Endl.	편백	A; B; D; G			
				<i>Chamaecyparis pisifera</i> (Siebold & Zucc.) Endl.	화백	G			
				<i>Juniperus chinensis</i> L.	향나무	A; B; C; D; E			
				<i>Juniperus virginiana</i> L.	연필향나무	A; B			
				<i>Juniperus</i> spp.	향나무류	G			
				<i>Thuja occidentalis</i> L.	서양측백나무	A			
				<i>Thuja orientalis</i> L.	측백나무	A; B; D; G			
				<i>Thujiopsis dolabrata</i> (L.f.) Siebold & Zucc.	나한백	A; B; D			
				<i>Stenomalus muneaka</i> Hayashi	노랑다리송사리엿하늘소	느릅나무과(Ulmaceae)	<i>Celtis jessoensis</i> Koidz.	풍계나무	E
							<i>Celtis</i> spp.	팽나무류	C
	<i>Stenomalus taiwanus</i> Matsushita	송사리엿하늘소	윤향과(Rutaceae)	<i>Zanthoxylum schinifolium</i> Siebold & Zucc.	산초나무	C; E			
	<i>Stenygrinum quadrinotatum</i> Bates	네눈박이하늘소	뽕나무과(Moraceae)	<i>Morus</i> spp.	뽕나무류	B; D			
			웃나무과(Anacardiaceae)	<i>Rhus verniciflua</i> Stokes	웃나무	B; D			
			참나무과(Fagaceae)	<i>Castanea crenata</i> Siebold & Zucc.	밤나무	A; B; D			
				<i>Quercus acuta</i> Thunb.	붉가시나무	B; D			
				<i>Quercus acutissima</i> Carruth.	상수리나무	A; B; D			
				<i>Quercus aliena</i> Blume	갈참나무	B; D			
				<i>Quercus serrata</i> Thunb. ex Murray	졸참나무	A; B; D			
				<i>Vitis coignetiae</i> Pulliat ex Planch.	머루	E			
				<i>Teratoclytus plavilstshikovi</i> Zaitzev	긴촉각범하늘소	포도과(Vitaceae)	<i>Vitis coignetiae</i> Pulliat ex Planch.	머루	E
						느릅나무과(Ulmaceae)	<i>Ulmus</i> spp.	느릅나무류	D
물푸레나무과(Oleaceae)	<i>Fraxinus</i> spp.	물푸레나무류				D			
버드나무과(Salicaceae)	<i>Populus</i> spp.	사시나무류				D			
	<i>Salix</i> spp.	버드나무류				D			
자작나무과(Betulaceae)	<i>Betula</i> spp.	자작나무류				D			
장미과(Rosaceae)	<i>Malus pumila</i> Mill.	사과나무				D			
	<i>Pyrus pyrifolia</i> var. <i>culta</i> (Makino) Nakai	배나무				D			
콩과(Leguminosae)	<i>Robinia pseudoacacia</i> L.	아까시나무				D			
버드나무과(Salicaceae)	<i>Salix</i> spp.	버드나무류				A; B; D			
	<i>Xylotrechus adspersus</i> (Gebler)	북방호랑하늘소	뽕나무과(Moraceae)	<i>Morus alba</i> L.	뽕나무	C; D; E			
				<i>Morus bombycis</i> Koidz.	산뽕나무	A			
				<i>Morus</i> spp.	뽕나무류	A; B			
	<i>Xylotrechus chinensis</i> (Chevrolat)	호랑하늘소	뽕나무과(Moraceae)	<i>Morus alba</i> L.	뽕나무	C; D; E			
				<i>Morus bombycis</i> Koidz.	산뽕나무	A			
				<i>Morus</i> spp.	뽕나무류	A; B			

CERAMBYCIDAE			HOST PLANT			REF. <sup>2</sup>
Subf. <sup>1</sup>	Scientific name	Korean name	Family	Scientific name	Korean name	
			장미과(Rosaceae)	<i>Malus pumila</i> Mill.	사과나무	B; D
				<i>Pyrus</i> spp.	배나무류	A
	<i>Xylotrechus clarinus</i> Bates	북자호랑하늘소	자작나무과(Betulaceae)	<i>Alnus hirsuta</i> f. <i>glabra</i> T.B. Lee	민물오리나무	A; B; D
				<i>Betula platyphylla</i> var. <i>japonica</i> (Miq.) H. Hara	자작나무	A; B; D
	<i>Xylotrechus cuneipennis</i> (Kraatz)	세줄호랑하늘소	느릅나무과(Ulmaceae)	<i>Ulmus</i> spp.	느릅나무류	A; B; D
			소나무과(Pinaceae)	<i>Abies</i> spp.	전나무류	A; D
	<i>Xylotrechus grayii</i> (White)	별가슴호랑하늘소	참나무과(Fagaceae)	<i>Quercus mongolica</i> Fisch. ex Ledeb.	신갈나무	E
			느릅나무과(Ulmaceae)	<i>Ulmus davidiana</i> var. <i>japonica</i> (Rehder) Nakai	느릅나무	E
			현삼과(Scrophulariaceae)	<i>Paulownia tomentosa</i> (Thunb.) Steud.	참오동나무	B
	<i>Xylotrechus hircus</i> (Gebler)	갈색호랑하늘소	자작나무과(Betulaceae)	<i>Betula costata</i> Trautv.	거제수나무	A; B; D
				<i>Betula davurica</i> Pall.	물박달나무	A; B; D
	<i>Xylotrechus hircus</i> (Gebler)	갈색호랑하늘소	자작나무과(Betulaceae)	<i>Betula platyphylla</i> Sukaczew	민주자작나무	B; D
				<i>Betula platyphylla</i> var. <i>japonica</i> (Miq.) H. Hara	자작나무	A
	<i>Xylotrechus pyrrhoderus</i> Bates	포도호랑하늘소	포도과(Vitaceae)	<i>Ampelopsis brevipedunculata</i> (Maxim.) Trautv.	개머루	B; D
				<i>Parthenocissus tricuspidata</i> (Siebold & Zucc.) Planch.	담쟁이덩굴	B
				<i>Vitis</i> spp.	포도류	C
				<i>Vitis vinifera</i> L.	포도	A; B; D; E
	<i>Xylotrechus rufilius</i> Bates	홍가슴호랑하늘소	가래나무과(Juglandaceae)	<i>Juglans regia</i> L.	호두나무	E
			느릅나무과(Ulmaceae)	<i>Ulmus parvifolia</i> Jacq.	참느릅나무	A
			단풍나무과(Aceraceae)	<i>Acer pictum</i> subsp. <i>mono</i> (Maxim.) Ohashi	고로쇠나무	B; D
			물푸레나무과(Oleaceae)	<i>Fraxinus mandshurica</i> Rupr.	들메나무	A; B; D
	<i>Xylotrechus rusticus</i> (Linnaeus)	줄호랑하늘소	느릅나무과(Ulmaceae)	<i>Ulmus</i> spp.	느릅나무류	A; D
			버드나무과(Salicaceae)	<i>Populus x canadensis</i> Moench	-	D
				<i>Populus davidiana</i> Dode	사시나무	B; D
				<i>Populus nigra</i> var. <i>italica</i> Koehne	양버들	E
				<i>Populus maximowiczii</i> A. Henry	황철나무	B; D
				<i>Populus sieboldii</i> Miq.	일본사시나무	A
				<i>Populus</i> spp.	사시나무류	A
				<i>Salix</i> spp.	버드나무류	A; D
			자작나무과(Betulaceae)	<i>Alnus hirsuta</i> f. <i>glabra</i> T.B. Lee	민물오리나무	D
				<i>Betula platyphylla</i> var. <i>japonica</i> (Miq.) H. Hara	자작나무	B; D
				<i>Betula</i> spp.	자작나무류	A
			참나무과(Fagaceae)	<i>Fagus engleriana</i> Seemen ex Diels	너도밤나무	B
				<i>Fagus</i> spp.	너도밤나무류	A
				<i>Quercus acutissima</i> Carruth.	상수리나무	A; B; D
			느릅나무과(Ulmaceae)	<i>Ulmus</i> spp.	느릅나무류	B; G
			버드나무과(Salicaceae)	<i>Populus davidiana</i> Dode	사시나무	G
				<i>Populus maximowiczii</i> A. Henry	황철나무	G
				<i>Salix</i> spp.	버드나무류	B; G
			자작나무과(Betulaceae)	<i>Alnus hirsuta</i> f. <i>glabra</i> T.B. Lee	민물오리나무	B; G
				<i>Betula platyphylla</i> var. <i>japonica</i> (Miq.) H. Hara	자작나무	G
			피나무과(Tiliaceae)	<i>Tilia</i> spp.	피나무류	A; B; D; G
			참나무과(Fagaceae)	<i>Quercus acutissima</i> Carruth.	상수리나무	G
	<i>Xylotrechus salicis</i> Takakuwa et Oda	얇은줄호랑하늘소	버드나무과(Salicaceae)	<i>Populus nigra</i> var. <i>italica</i> Koehne	양버들	E
	<i>Xylotrechus yanoi</i> Gressitt	노랑줄호랑하늘소	느릅나무과(Ulmaceae)	<i>Celtis sinensis</i> Pers.	팽나무	C
	<i>Xystrocrea globosa</i> (Lliver)	청줄하늘소	장미과(Rosaceae)	<i>Prunus persica</i> (L.) Batsch	복사나무	A; B; D
			콩과(Leguminosae)	<i>Acacia confusa</i> Merr.	대만아카시아나무	A
				<i>Adenantha pavonina</i> L.	-	A
				<i>Albizia julibrissin</i> Durazz.	자귀나무	E
				<i>Albizia lebbek</i> (L.) Benth.	비루마작위나무	A
				<i>Albizia</i> spp.	자귀나무류	B; D
				<i>Chamaecrista</i> spp.	차풀류	A
			피나무과(Tiliaceae)	<i>Grewia parviflora</i> Bunge	장구밤나무	B; D
				<i>Grewia</i> spp.	장구밤나무류	A
				<i>Ficus carica</i> L.	무화과나무	B
				<i>Ficus elastica</i> Roxb.	인도고무나무	B
			소나무과(Pinaceae)	<i>Abies</i> spp.	전나무류	A
				<i>Picea jezoensis</i> (Siebold & Zucc.) Carriere	가문비나무	D
				<i>Picea</i> spp.	가문비나무류	A
				<i>Pinus densiflora</i> Siebold & Zucc.	소나무	A; D
			자작나무과(Betulaceae)	<i>Betula davurica</i> Pall.	물박달나무	E
LA	<i>Acalolepta degener</i> (Bates)	애기우단하늘소	두릅나무과(Araliaceae)	<i>Aralia elata</i> (Miq.) Seem.	두릅나무	B; D
				<i>Aralia</i> spp.	두릅나무류	A

CERAMBYCIDAE			HOST PLANT			REF. <sup>2</sup>
Subf. <sup>1</sup>	Scientific name	Korean name	Family	Scientific name	Korean name	
<i>Acalolepta fraudatrix</i> (Bates)		우단하늘소	가래나무과(Juglandaceae)	<i>Juglans regia</i> L.	호두나무	E
			굴거리나무과(Daphniphyllaceae)	<i>Daphniphyllum macropodum</i> Miq.	굴거리나무	A; B; D
			두릅나무과(Araliaceae)	<i>Fatsia japonica</i> (Thunb.) Decne. & Planch.	팔손이	D
			자작나무과(Betulaceae)	<i>Alnus hirsuta</i> f. <i>glabra</i> T.B. Lee	민물오리나무	B; D
			콩과(Leguminosae)	<i>Albizia julibrissin</i> Durazz.	자귀나무	E
<i>Acalolepta luxuriosa</i> (Bates)		큰우단하늘소	두릅나무과(Araliaceae)	<i>Aralia cordata</i> var. <i>continentalis</i> (Kitag.) Y. C. Chu	독활	B
				<i>Aralia elata</i> (Miq.) Seem.	두릅나무	D; E
				<i>Fatsia japonica</i> (Thunb.) Decne. & Planch.	팔손이	A; B; D; E
				<i>Kalopanax septemlobus</i> (Thunb.) Koidz.	읍나무	A; B; D
			소나무과(Pinaceae)	<i>Abies</i> spp.	전나무류	A
<i>Acalolepta sejuncta</i> (Bates)		작은우단하늘소	피나무과(Tiliaceae)	<i>Tilia amurensis</i> Rupr.	피나무	A; B; D
			물푸레나무과(Oleaceae)	<i>Fraxinus mandshurica</i> Rupr.	물메나무	A; B
				<i>Fraxinus rhynchophylla</i> Hance	물푸레나무	D
			은행나무과(Ginkgoaceae)	<i>Ginkgo biloba</i> L.	은행나무	D
			자작나무과(Betulaceae)	<i>Alnus hirsuta</i> f. <i>glabra</i> T.B. Lee	민물오리나무	B; D
<i>Acanthocinus aedilis</i> (Linnaeus)		솔곤봉수염하늘소		<i>Alnus</i> spp.	오리나무류	A
			층층나무과(Cornaceae)	<i>Cornus controversa</i> Hemsl.	층층나무	E
			소나무과(Pinaceae)	<i>Abies holophylla</i> Maxim.	전나무	A; B; D
				<i>Picea jezoensis</i> (Siebold & Zucc.) Carriere	가문비나무	A; B; D
				<i>Pinus densiflora</i> Siebold & Zucc.	소나무	A; B; D
<i>Acanthocinus carinulatus</i> Gebler		북방곤봉수염하늘소	소나무과(Pinaceae)	<i>Pinus koraiensis</i> Siebold & Zucc.	잣나무	A; B; D
				<i>Pinus sylvestris</i> L.	구주소나무	A
				<i>Abies</i> spp.	전나무류	D
				<i>Larix kaempferi</i> (Lamb.) Carriere	일본잎갈나무	A; B; D
				<i>Picea jezoensis</i> (Siebold & Zucc.) Carriere	가문비나무	B; D
<i>Acanthocinus griseus</i> (Fabricius)		곤봉수염하늘소		<i>Pinus koraiensis</i> Siebold & Zucc.	잣나무	A; B; D
			자작나무과(Betulaceae)	<i>Alnus hirsuta</i> f. <i>glabra</i> T. B. Lee	민물오리나무	B
				<i>Alnus sibirica</i> Fisch. ex Turcz.	물오리나무	D
			소나무과(Pinaceae)	<i>Picea jezoensis</i> (Siebold & Zucc.) Carriere	가문비나무	B
				<i>Pinus</i> spp.	소나무류	A; D
<i>Acanthoderes clavipes</i> (Scharank)		큰곤봉수염하늘소	자작나무과(Betulaceae)	<i>Alnus hirsuta</i> f. <i>glabra</i> T. B. Lee	민물오리나무	B
			참나무과(Fagaceae)	<i>Quercus</i> spp.	참나무류	A; B
			버드나무과(Salicaceae)	<i>Populus davidiana</i> Dode	사시나무	B; D
				<i>Populus sieboldii</i> Miq.	일본사시나무	A
				<i>Salix</i> spp.	버드나무류	B
<i>Anaerea carcharias</i> (Linnaeus)		백두산긴하늘소	소나무과(Pinaceae)	<i>Abies</i> spp.	전나무류	A
			버드나무과(Salicaceae)	<i>Populus davidiana</i> Dode	사시나무	A; B; D
			버드나무과(Salicaceae)	<i>Populus nigra</i> var. <i>italica</i> Koehne	양버들	A
<i>Anoplophora chinensis</i> (Forster)		알락하늘소	가래나무과(Juglandaceae)	<i>Juglans mandshurica</i> Maxim.	가래나무	G
				<i>Juglans</i> spp.	가래나무류	A; D
			낙우송과(Taxodiaceae)	<i>Cryptomeria japonica</i> (L.f.) D. Don	삼나무	D; G
			느릅나무과(Ulmaceae)	<i>Ulmus davidiana</i> var. <i>japonica</i> (Rehder) Nakai	느릅나무	B
			단풍나무과(Aceraceae)	<i>Acer saccharinum</i> L.	은단풍	D
			도금양과(Myrtaceae)	<i>Psidium guajava</i> L.	반식류	A
			대극과(Euphorbiaceae)	<i>Mallotus japonicus</i> (Thunb.) Muell. Arg.	예덕나무	B
			매죽나무과(Styracaceae)	<i>Styrax japonicus</i> Siebold & Zucc.	매죽나무	D; G
			멸구슬나무과(Meliaceae)	<i>Melia azedarach</i> L.	멸구슬나무	B
			박과(Cucurbitaceae)	<i>Momordica charantia</i> L.	여주	A
			버드나무과(Salicaceae)	<i>Populus</i> spp.	사시나무류	B; D; G
				<i>Salix babylonica</i> L.	수양버들	A
				<i>Salix koreensis</i> Andersson	버드나무	D; G
				<i>Salix</i> spp.	버드나무류	B; C
			버즘나무과(Platanaceae)	<i>Platanus occidentalis</i> L.	양버즘나무	B; D
				<i>Platanus orientalis</i> L.	버즘나무	B; G
			부처꽃과(Lythraceae)	<i>Lagerstroemia indica</i> L.	배롱나무	D; G
			뽕나무과(Moraceae)	<i>Broussonetia papyrifera</i> (L.) L'Her. ex Vent.	꾸지나무	A; D
				<i>Ficus carica</i> L.	무화과나무	A; B; D
				<i>Morus alba</i> L.	뽕나무	A; D; G
				<i>Morus</i> spp.	뽕나무류	B
			석류나무과(Punicaceae)	<i>Punica granatum</i> L.	석류나무	D; G
			아욱과(Malvaceae)	<i>Hibiscus syriacus</i> L.	무궁화	G
	<i>Hibiscus</i> spp.	무궁화류	D			
윤향과(Rutaceae)	<i>Atalantia buxifolia</i> (Poir.) Oliv.	회양밀감	A			

CERAMBYCIDAE			HOST PLANT		REF. <sup>2</sup>		
Subf. <sup>1</sup>	Scientific name	Korean name	Family	Scientific name		Korean name	
<i>Anoplophora glabripennis</i> (Motschulsky) 유리알락하늘소			자작나무과(Betulaceae)	<i>Citrus junos</i> Siebold ex Tanaka	유자나무	D; G	
				<i>Citrus</i> spp.	귤류	A; B	
				<i>Citrus unshiu</i> S. Marcov.	귤	D; G	
				<i>Poncirus trifoliata</i> Raf.	탱자나무	B; D; G	
				<i>Alnus firma</i> Siebold & Zucc.	사방오리	D; G	
				<i>Alnus hirsuta</i> f. <i>glabra</i> T.B. Lee	민물오리나무	B; D; G	
				<i>Betula platyphylla</i> var. <i>japonica</i> (Miq.) H. Hara	자작나무	D; G	
				장미과(Rosaceae)	<i>Malus pumila</i> Mill.	사과나무	D; B; G
					<i>Prunus</i> spp.	벚나무류	D
					<i>Pyrus pyrifolia</i> var. <i>culta</i> (Makino) Nakai	배나무	B; D; G
					<i>Pyrus ussuriensis</i> Maxim.	산돌배	D
					<i>Rosa multiflora</i> Thunb.	찔레꽃	D; G
			<i>Rosa rugosa</i> Thunb.		해당화	D; G	
			참나무과(Fagaceae)	<i>Rosa</i> spp.	장미류	B; D	
				<i>Castanea crenata</i> Siebold & Zucc.	밤나무	G	
			단풍나무과(Aceraceae)	<i>Castanea</i> spp.	밤나무류	D	
				<i>Ulmus parvifolia</i> Jacq.	참느릅나무	A; B	
				<i>Ulmus pumila</i> L.	비술나무	A; B; D	
				<i>Acer saccharinum</i> L.	은단풍	F	
				<i>Acer tegmentosum</i> Maxim.	산겨릅나무	<b>New record</b>	
				<i>Acer pictum</i> subsp. <i>mono</i> (Maxim.) Ohashi	고로쇠나무	F	
				<i>Acer pictum</i> var. <i>truncatum</i> (Bunge) C. S. Chang	민주고로쇠	F	
				대극과(Euphorbiaceae)	<i>Mallotus japonicus</i> (Thunb.) Muell. Arg.	예덕나무	A
					<i>Vernicia montana</i> Lour.	일본유동	B
				멸구슬나무과(Meliaceae)	<i>Melia azedarach</i> L.	멸구슬나무	A
				목마황과(Casuarinaceae)	<i>Casuarina</i> spp.	목마황류	A
				버드나무과(Salicaceae)	<i>Populus maximowiczii</i> A. Henry	황철나무	A; B; D
<i>Salix babylonica</i> L.	수양버들	A					
<i>Salix</i> spp.	버드나무류	A; B; D					
버즘나무과(Platanaceae)	<i>Platanus orientalis</i> L.	버즘나무	A				
뽕나무과(Moraceae)	<i>Morus</i> spp.	뽕나무류	A				
운향과(Rutaceae)	<i>Citrus</i> spp.	귤류	A				
장미과(Rosaceae)	<i>Malus</i> spp.	사과나무류	A				
<i>Apriona germari</i> (Hope) 뽕나무하늘소			콩과(Leguminosae)	<i>Cajanus indicus</i> Spreng	목두	A	
			가래나무과(Juglandaceae)	<i>Juglans mandshurica</i> Maxim.	가래나무	G	
			<i>Juglans</i> spp.	가래나무류	D		
			<i>Platycarya strobilacea</i> Siebold & Zucc.	굴피나무	A; B		
			감나무과(Ebenaceae)	<i>Diospyros kaki</i> Thunb.	감나무	D; G	
			녹나무과(Lauraceae)	<i>Cinnamomum camphora</i> (L.) J. Presl	녹나무	B; D; G	
			느릅나무과(Ulmaceae)	<i>Celtis sinensis</i> Pers.	팽나무	A; B	
				<i>Ulmus pumila</i> L.	비술나무	A	
				<i>Ulmus</i> spp.	느릅나무류	B; D; G	
			대극과(Euphorbiaceae)	<i>Vernicia fordii</i> (Hemsl.) Airy Shaw	유동	A	
			버드나무과(Salicaceae)	<i>Populus alba</i> L.	은백양	B	
				<i>Populus nigra</i> var. <i>italica</i> Koehne	양버들	B	
<i>Populus maximowiczii</i> A. Henry	황철나무	B					
<i>Populus</i> spp.	사시나무류	B; D; G					
<i>Salix babylonica</i> L.	수양버들	B					
<i>Salix gracilistyla</i> Miq.	갯버들	A					
<i>Salix purpurea</i> var. <i>smithiana</i> Trautv.	당키버들	A					
<i>Salix</i> spp.	버드나무류	B; D; G					
벽오동과(Sterculiaceae)	<i>Firmiana simplex</i> (L.) W. F. Wight	벽오동		D; G			
부처꽃과(Lythraceae)	<i>Lagerstroemia indica</i> L.	배롱나무		A; D; G			
뽕나무과(Moraceae)	<i>Broussonetia kazinoki</i> Siebold	닥나무	D; G				
	<i>Broussonetia papyrifera</i> (L.) L'Her. ex Vent.	꾸지나무	A; B; D; G				
	<i>Ficus carica</i> L.	무화과나무	A; B; D; E; G				
	<i>Morus alba</i> L.	뽕나무	A; D; E				
	<i>Morus</i> spp.	뽕나무류	B; G				
	석류나무과(Punicaceae)	<i>Punica granatum</i> L.	석류나무	D; G			
장미과(Rosaceae)	<i>Eriobotrya japonica</i> (Thunb.) Lindl.	비파나무	D; G				
	<i>Malus pumila</i> Mill.	사과나무	B; D; G				
	<i>Pyrus pyrifolia</i> var. <i>culta</i> (Makino) Nakai	배나무	D; G				
	<i>Pyrus</i> spp.	배나무류	B; A				
	<i>Rubus</i> spp.	산딸기류	D; G				

CERAMBYCIDAE			HOST PLANT			REF. <sup>2</sup>			
Subf. <sup>1</sup>	Scientific name	Korean name	Family	Scientific name	Korean name				
<i>Bacchisa fortunei</i> (Thomson)	남색하늘소		율향과(Rutaceae)	<i>Citrus</i> spp.	귤속	A			
				<i>Citrus unshiu</i> S. Marcov.	귤	D; G			
				참나무과(Fagaceae)	<i>Quercus acuta</i> Thunb.	붉가시나무	D; G		
				콩과(Leguminosae)	<i>Cajanus</i> spp.	목두류	A		
				뽕나무과(Moraceae)	<i>Ficus carica</i> L.	무화과나무	B		
				장미과(Rosaceae)	<i>Chaenomeles sinensis</i> (Thouin) Koehne	모과나무	B		
					<i>Chaenomeles</i> spp.	명자나무류	D		
					<i>Crataegus cuneata</i> Siebold & Zucc.	일본산시나무	A		
					<i>Malus micromalus</i> Makino	개아그베나무	B; D		
					<i>Malus pumila</i> Mill.	사과나무	B; D		
					<i>Malus sieboldii</i> (Regel) Rehder	아그베나무	B		
					<i>Photinia glabra</i> (Thunb.) Maxim.	홍가시나무	D		
					<i>Photinia serratifolia</i> (Desf.) Kalkman	붉은싸나무	A		
					<i>Prunus armeniaca</i> var. <i>ansu</i> Maxim.	살구나무	A; B		
					<i>Prunus domestica</i> L.	서양자두	A		
					<i>Prunus mume</i> Siebold & Zucc.	매실나무	A; B; D		
					<i>Prunus persica</i> (L.) Batsch	복사나무	B		
					<i>Prunus salicina</i> Lindl.	자두나무	B		
			<i>Batocera lineolata</i> Chevrolat	참나무하늘소			<i>Prunus</i> spp.	벗나무류	D
							<i>Pyrus pyrifolia</i> var. <i>culta</i> (Makino) Nakai	배나무	B; D; E
		<i>Pyrus ussuriensis</i> Maxim.				산돌배	D		
	느릅나무과(Ulmaceae)	<i>Ulmus davidiana</i> var. <i>japonica</i> (Rehder) Nakai				느릅나무	D		
		<i>Ulmus</i> spp.				느릅나무류	A		
		<i>Zelkova serrata</i> (Thunb.) Makino				느티나무	D; G		
	버드나무과(Salicaceae)	<i>Populus</i> spp.				사시나무류	B; D		
		<i>Salix</i> spp.				버드나무류	A; B; D		
	뽕나무과(Moraceae)	<i>Broussonetia kazinoki</i> Siebold				닥나무	G		
		<i>Ficus carica</i> L.				무화과나무	A; B; D		
		<i>Morus</i> spp.				뽕나무류	A		
	자작나무과(Betulaceae)	<i>Alnus hirsuta</i> f. <i>glabra</i> T.B. Lee				민물오리나무	B		
	장미과(Rosaceae)	<i>Pyrus pyrifolia</i> var. <i>culta</i> (Makino) Nakai				배나무	D		
		<i>Pyrus ussuriensis</i> Maxim.				산돌배	D		
	참나무과(Fagaceae)	<i>Castanea crenata</i> Siebold & Zucc.				밤나무	A; B; D; G		
		<i>Castanopsis cuspidata</i> (Thunb.) Schottky				모밀잣밤나무	A		
		<i>Castanopsis sieboldii</i> (Makino) Hatus.				구실잣밤나무	A; D; G		
		<i>Fagus</i> spp.				너도밤나무류	A		
		<i>Quercus acuta</i> Thunb.				붉가시나무	G		
		<i>Quercus acutissima</i> Carruth.				상수리나무	A; B; D		
		<i>Quercus aliena</i> Blume	갈참나무	B					
		<i>Quercus dentata</i> Thunb.	떡갈나무	A; B; D					
		<i>Quercus glauca</i> Thunb.	총가시나무	A; G					
		<i>Quercus serrata</i> Thunb. ex Murray	줄참나무	A; B; D					
		<i>Quercus</i> spp.	참나무류	C					
<i>Compsidia balsamifera</i> Motschulsky	별긴하늘소		현삼과(Scrophulariaceae)	<i>Paulownia coreana</i> Uyeki	오동나무	G			
				<i>Paulownia tomentosa</i> (Thunb.) Steud.	참오동나무	B; D			
				버드나무과(Salicaceae)	<i>Populus davidiana</i> Dode	사시나무	B; D		
					<i>Populus maximowiczii</i> A. Henry	황철나무	B; D		
					<i>Populus</i> spp.	사시나무류	C		
					<i>Populus tomentiglandulosa</i> T. B. Lee	은사시나무	E		
					<i>Salix</i> spp.	버드나무류	B; D		
					<i>Populus alba</i> L.	은백양	D; G		
					<i>Populus davidiana</i> Dode	사시나무	D; G		
					<i>Populus maximowiczii</i> A. Henry	황철나무	A; D; G		
<i>Compsidia populnea</i> (Linnaeus)	작은별긴하늘소			<i>Populus</i> spp.	사시나무류	A; G			
				<i>Salix</i> spp.	버드나무류	A			
				소나무과(Pinaceae)	<i>Abies holophylla</i> Maxim.	전나무	E		
				뽕나무과(Moraceae)	<i>Morus alba</i> L.	뽕나무	E		
				가래나무과(Juglandaceae)	<i>Juglans mandshurica</i> Maxim.	가래나무	E		
				느릅나무과(Ulmaceae)	<i>Ulmus davidiana</i> var. <i>japonica</i> (Rehder) Nakai	느릅나무	E		
				자작나무과(Betulaceae)	<i>Carpinus laxiflora</i> (Siebold & Zucc.) Blume	서어나무	<b>New record</b>		
				참나무과(Fagaceae)	<i>Castanea crenata</i> Siebold & Zucc.	밤나무	E		
				뽕나무과(Moraceae)	<i>Broussonetia papyrifera</i> (L.) L'Her. ex Vent.	꾸지나무	I		
				국화과(Compositae)	<i>Senecio</i> spp.	금방망이류	A		
<i>Doius divaricatus</i> (Bates)	권하늘소								
<i>Egesina bifasciana</i> (Matsushita)	꼬마하늘소								
<i>Epiglenea comes</i> Bates	노랑줄점하늘소								
<i>Eumecocera impustulata</i> (Motschulsky)	당나귀하늘소								
<i>Eupogoniopsis granulatus</i> Lim	흑민하늘소								
<i>Eutetrappa sedecimpunctata</i> (Motschulsky)	네모하늘소								



CERAMBYCIDAE			HOST PLANT			REF. <sup>2</sup>
Subf. <sup>1</sup>	Scientific name	Korean name	Family	Scientific name	Korean name	
<i>Exocentrus fisheri</i> Gressitt	김은콩알하늘소	버드나무과(Salicaceae)	<i>Salix</i> spp.	버드나무류	A; D	
		피나무과(Tiliaceae)	<i>Tilia amurensis</i> Rupr.	피나무	A; B; D	
		느릅나무과(Ulmaceae)	<i>Zelkova serrata</i> (Thunb.) Makino	느티나무	E	
		참나무과(Fagaceae)	<i>Castanea crenata</i> Siebold & Zucc.	밤나무	E	
<i>Exocentrus lineatus</i> (Bates)	줄콩알하늘소	가래나무과(Juglandaceae)	<i>Juglans regia</i> L.	호두나무	E	
		느릅나무과(Ulmaceae)	<i>Celtis jessoensis</i> Koidz.	풍계나무	E	
		장미과(Rosaceae)	<i>Pyrus pyrifolia</i> var. <i>culta</i> (Makino) Nakai	배나무	E	
		콩과(Leguminosae)	<i>Albizia julibrissin</i> Durazz.	자귀나무	E	
<i>Exocentrus testudineus</i> Matsushita	무늬콩알하늘소	가래나무과(Juglandaceae)	<i>Juglans regia</i> L.	호두나무	E	
		<i>Glenea relicta</i> Pascoe	가래나무과(Juglandaceae)	<i>Platycarya strobilacea</i> Siebold & Zucc.	굴피나무	E
			느릅나무과(Ulmaceae)	<i>Ulmus</i> spp.	느릅나무류	A; B; D
<i>Lamia textor</i> (Linnaeus)	목하늘소	참나무과(Fagaceae)	<i>Quercus acuta</i> Thunb.	붉가시나무	<b>New record</b>	
		버드나무과(Salicaceae)	<i>Populus davidiana</i> Dode	사시나무	B; D	
			<i>Populus maximowiczii</i> A. Henry	황철나무	A; B; D	
			<i>Populus</i> spp.	사시나무류	B	
			<i>Salix babylonica</i> L.	수양버들	A	
			<i>Salix</i> spp.	버드나무류	A; B; C; D	
			<i>Salix</i> spp.	버드나무류	A; B; D	
			<i>Quercus dentata</i> Thunb.	떡갈나무	A; B; D	
			<i>Quercus serrata</i> Thunb. ex Murray	졸참나무	A; B; D	
			<i>Alnus sibirica</i> Fisch. ex Turcz.	물오리나무	E	
<i>Leiopis stillatus</i> (Bates)	산꼬마수염하늘소	자작나무과(Betulaceae)	<i>Acer pictum</i> subsp. <i>mono</i> (Maxim.) Ohashi	고로쇠나무	A; B; D	
<i>Mecynippus pubicornis</i> Bates	단풍수염하늘소	단풍나무과(Aceraceae)	<i>Acer</i> spp.	단풍나무류	B; C	
<i>Mecynippus pubicornis</i> Bates	단풍수염하늘소	버드나무과(Salicaceae)	<i>Salix</i> spp.	버드나무류	B; D	
<i>Menesia sulphurata</i> (Gebler)	별황하늘소	자작나무과(Betulaceae)	<i>Alnus hirsuta</i> f. <i>glabra</i> T.B. Lee	민물오리나무	B; D	
		가래나무과(Juglandaceae)	<i>Juglans</i> spp.	가래나무류	A; B; D	
<i>Mesosa hirsuta</i> Bates	흰깨다시하늘소	가래나무과(Juglandaceae)	<i>Juglans regia</i> L.	호두나무	E	
		가래나무과(Juglandaceae)	<i>Platycarya strobilacea</i> Siebold & Zucc.	굴피나무	E	
		느릅나무과(Ulmaceae)	<i>Celtis jessoensis</i> Koidz.	풍계나무	E	
			<i>Ulmus davidiana</i> var. <i>japonica</i> (Rehder) Nakai	느릅나무	B	
			<i>Ulmus</i> spp.	느릅나무류	A; D	
		자작나무과(Betulaceae)	<i>Alnus sibirica</i> Fisch. ex Turcz.	물오리나무	E	
			<i>Carpinus turczaninowii</i> Hance	소사나무	E	
		참나무과(Fagaceae)	<i>Castanea crenata</i> Siebold & Zucc.	밤나무	E	
		피나무과(Tiliaceae)	<i>Tilia amurensis</i> Rupr.	피나무	A; B; D	
		느릅나무과(Ulmaceae)	<i>Ulmus davidiana</i> var. <i>japonica</i> (Rehder) Nakai	느릅나무	B; D	
			<i>Ulmus</i> spp.	느릅나무류	A	
		대극과(Euphorbiaceae)	<i>Mallotus japonicus</i> (Thunb.) Muell. Arg.	예덕나무	A	
		소태나무과(Simaroubaceae)	<i>Ailanthus altissima</i> (Mill.) Swingle	가죽나무	A; B; D	
		운향과(Rutaceae)	<i>Citrus</i> spp.	귤류	B; D	
참나무과(Fagaceae)	<i>Castanopsis cuspidata</i> (Thunb.) Schottky	모밀잣밤나무	A; B			
	<i>Castanopsis sieboldii</i> (Makino) Hatus.	구실잣밤나무	D			
	<i>Quercus</i> spp.	참나무류	A; B; D			
<i>Mesosa myops</i> (Dalman)	깨다시하늘소	콩과(Leguminosae)	<i>Cladrastis</i> spp.	다릅나무류	A	
		피나무과(Tiliaceae)	<i>Tilia amurensis</i> Rupr.	피나무	A; B; D	
		가래나무과(Juglandaceae)	<i>Juglans mandshurica</i> Maxim.	가래나무	<b>New record</b>	
		느릅나무과(Ulmaceae)	<i>Ulmus parvifolia</i> Jacq.	참느릅나무	A; B	
		소나무과(Pinaceae)	<i>Larix olgensis</i> var. <i>amurensis</i> (Kolesn.) Kitag.	만주잎갈나무	B	
			<i>Larix kaempferi</i> (Lamb.) Carriere	일본잎갈나무	A	
			<i>Pinus koraiensis</i> Siebold & Zucc.	잣나무	A; B	
		욱나무과(Anacardiaceae)	<i>Rhus verniciflua</i> Stokes	욱나무	A; B; D	
		운향과(Rutaceae)	<i>Citrus</i> spp.	귤류	D	
		자작나무과(Betulaceae)	<i>Alnus sibirica</i> Fisch. ex Turcz.	물오리나무	A	
			<i>Alnus</i> spp.	오리나무류	B	
		장미과(Rosaceae)	<i>Prunus</i> spp.	벚나무류	D	
			<i>Pyrus pyrifolia</i> var. <i>culta</i> (Makino) Nakai	배나무	D	
			<i>Pyrus</i> spp.	배나무류	A; B	
참나무과(Fagaceae)	<i>Castanea</i> spp.	밤나무류	D			
	<i>Quercus mongolica</i> Fisch. ex Ledeb.	신갈나무	E			
	<i>Quercus serrata</i> Thunb. ex Murray	졸참나무	A; B			
<i>Moechotypa diphyis</i> (Pascoe)	털두꺼비하늘소	콩과(Leguminosae)	<i>Pueraria lobata</i> (Willd.) Ohwi	쑥	E	
		가래나무과(Juglandaceae)	<i>Juglans mandshurica</i> Maxim.	가래나무	<b>New record</b>	
			<i>Platycarya strobilacea</i> Siebold & Zucc.	굴피나무	D; G	

CERAMBYCIDAE			HOST PLANT			REF. <sup>2</sup>
Subf. <sup>1</sup>	Scientific name	Korean name	Family	Scientific name	Korean name	
<i>Monochamus alternatus</i> Hope	솔수염하늘소	낙우송과(Taxodiaceae) 소나무과(Pinaceae)	감나무과(Ebenaceae)	<i>Diospyros kaki</i> Thunb.	감나무	E
			자작나무과(Betulaceae)	<i>Carpinus tschonoskii</i> Maxim.	개서어나무	D; G
			장미과(Rosaceae)	<i>Pyrus pyrifolia</i> var. <i>culta</i> (Makino) Nakai	배나무	E
			참나무과(Fagaceae)	<i>Castanea crenata</i> Siebold & Zucc.	밤나무	D; E; G
				<i>Quercus acuta</i> Thunb.	불가시나무	<b>New record</b>
				<i>Quercus acutissima</i> Carruth.	상수리나무	D; E; G
				<i>Quercus myrsinaefolia</i> Blume	가시나무	B; D; G
				<i>Quercus serrata</i> Thunb. ex Murray	졸참나무	D; G
				<i>Quercus</i> spp.	참나무류	A; B
				<i>Cryptomeria japonica</i> (L.f.) D. Don	삼나무	A; B; D; G
				<i>Abies firma</i> Siebold & Zucc.	일본전나무	A; B
				<i>Abies holophylla</i> Maxim.	전나무	B; D; G
				<i>Cedrus deodara</i> (Roxb. ex D. Don) G. Don	개잎갈나무	D
				<i>Larix</i> spp.	잎갈나무류	D
				<i>Picea</i> spp.	가문비나무류	D
				<i>Pinus densiflora</i> Siebold & Zucc.	소나무	A; B; D; G
				<i>Pinus koraiensis</i> Siebold & Zucc.	잣나무	G
				<i>Pinus rigida</i> Mill.	리기다소나무	G
				<i>Pinus strobus</i> L.	스트로브잣나무	D
				<i>Pinus thunbergii</i> Parl.	곰솔	A; B; D; G
<i>Monochamus saltuarius</i> (Gebler)	북방수염하늘소	소나무과(Pinaceae)	<i>Abies</i> spp.	참나무류	G	
			<i>Picea abies</i> (L.) H. Karst.	독일가문비	<b>New record</b>	
			<i>Picea</i> spp.	가문비나무류	G	
			<i>Pinus densiflora</i> Siebold & Zucc.	소나무	G	
			<i>Pinus koraiensis</i> Siebold & Zucc.	잣나무	G	
			<i>Pinus parviflora</i> Siebold & Zucc.	섬잣나무	G	
			<i>Pinus strobus</i> L.	스트로브잣나무	G	
			<i>Pinus thunbergii</i> Parl.	곰솔	G	
			<i>Pinus</i> spp.	소나무류	D	
			<i>Larix kaempferi</i> (Lamb.) Carriere	일본잎갈나무	G	
			<i>Larix</i> spp.	잎갈나무류	G	
			<i>Abies firma</i> Siebold & Zucc.	일본전나무	D	
			<i>Abies koreana</i> Wilson	구상나무	A; B; D	
			<i>Abies nephrolepis</i> (Trautv.) Maxim.	분비나무	A	
<i>Larix kaempferi</i> (Lamb.) Carriere	일본잎갈나무	B				
<i>Larix olgensis</i> var. <i>koreana</i> (Nakai) Nakai	잎갈나무	D				
<i>Larix</i> spp.	잎갈나무류	A				
<i>Picea jezoensis</i> (Siebold & Zucc.) Carriere	가문비나무	D				
<i>Picea</i> spp.	가문비나무류	A				
<i>Pinus koraiensis</i> Siebold & Zucc.	잣나무	A; B; D; E				
<i>Pinus pumila</i> (Pall.) Regel	눈잣나무	A; B; D				
<i>Pinus sylvestris</i> L.	구주소나무	A				
<i>Monochamus urusovi</i> (Fischer)	수염하늘소	소나무과(Pinaceae)	<i>Abies holophylla</i> Maxim.	전나무	A	
			<i>Abies koreana</i> Wilson	구상나무	A; D	
			<i>Abies nephrolepis</i> (Trautv.) Maxim.	분비나무	A; E	
			<i>Abies</i> spp.	전나무류	A	
			<i>Larix kaempferi</i> (Lamb.) Carriere	일본잎갈나무	D	
			<i>Abies koreana</i> E. H. Wilson	구상나무	B	
			<i>Abies</i> spp.	전나무류	B	
			<i>Larix olgensis</i> f. <i>viridis</i> (Wilson) Nakai	좀잎갈나무	A	
			<i>Larix</i> spp.	잎갈나무류	B	
			<i>Picea jezoensis</i> (Siebold & Zucc.) Carriere	가문비나무	A; B; D	
			<i>Pinus koraiensis</i> Siebold & Zucc.	잣나무	A	
			<i>Pseudosasa japonica</i> (Siebold & Zucc. ex Steud.) Makino	이대	H	
			<i>Sasa</i> spp.	조릿대류	D	
			<i>Albizia</i> spp.	자귀나무류	D	
<i>Nupserha marginella</i> (Bates)	선두리하늘소	콩과(Leguminosae) 장미과(Rosaceae)	<i>Malus pumila</i> Mill.	사과나무	B; D	
			<i>Pyrus pyrifolia</i> var. <i>culta</i> (Makino) Nakai	배나무	D	
			<i>Pyrus pyrifolia</i> (Burm.f.) Nakai	돌배나무	B	
			<i>Pyrus</i> spp.	배나무류	A	
<i>Oberea formosana</i> Pic	-	윤향과(Rutaceae) 장미과(Rosaceae)	<i>Euodia damiellii</i> Hemsl.	쉬나무	A	
			<i>Phellodendron amurense</i> Rupr.	황벽나무	A	
			<i>Sorbaria sorbifolia</i> var. <i>stellipila</i> Maxim.	쉬땅나무	B	

CERAMBYCIDAE			HOST PLANT			REF. <sup>2</sup>		
Subf. <sup>1</sup>	Scientific name	Korean name	Family	Scientific name	Korean name			
<i>Oberea fuscipennis</i> (Chevrolat)		홀쭉사과하늘소	율향과(Rutaceae)	<i>Euodia daniellii</i> Hemsl.	쉬나무	A; D		
				<i>Phellodendron amurense</i> Rupr.	황벽나무	A; B; D		
				<i>Malus pumila</i> Mill.	사과나무	B; D		
<i>Oberea herzi</i> Ganglbauer		우리사과하늘소	장미과(Rosaceae)	<i>Malus pumila</i> Mill.	사과나무	D		
<i>Oberea inclusa</i> Pascoe		사과하늘소	장미과(Rosaceae)	<i>Prunus persica</i> (L.) Batsch	복사나무	D		
<i>Oberea japonica</i> Thunberg	-		녹나무과(Lauraceae)	<i>Cinnamomum camphora</i> (L.) J. Presl	베나무	D		
				인동과(Caprifoliaceae)	<i>Lonicera japonica</i> Thunb.	인동덩굴	A	
					장미과(Rosaceae)	<i>Cydonia</i> spp.	-	A
				<i>Malus pumila</i> Mill.		사과나무	B	
				<i>Prunus cerasus</i> L.		구주벚나무	A	
				<i>Prunus persica</i> (L.) Batsch		복사나무	B	
				<i>Prunus salicina</i> Lindl.		자두나무	B	
				<i>Prunus</i> spp.		벚나무류	B	
				<i>Pyrus pyrifolia</i> (Burm.f.) Nakai		돌배나무	B	
				<i>Pyrus</i> spp.		배나무류	A	
				<i>Alnus</i> spp.		오리나무류	A; B; D	
<i>Oberea morio</i> Kraatz	검정사과하늘소	자작나무과(Betulaceae)	<i>Carpinus laxiflora</i> (Siebold & Zucc.) Blume	서어나무	B; D			
			<i>Carpinus</i> spp.	서어나무류	A			
			<i>Corylus heterophylla</i> Fisch. ex Trautv.	개암나무	B; D			
			<i>Corylus</i> spp.	개암나무류	A			
			<i>Ostrya japonica</i> Sarg.	새우나무	B			
			<i>Ostrya</i> spp.	새우나무류	A			
			<i>Oberea oculata</i> (Linnaeus)	두눈사과하늘소	버드나무과(Salicaceae)	<i>Salix babylonica</i> L.	수양버들	A; B; D
						<i>Salix caprea</i> L.	호랑버들	A
						<i>Salix koriyanagi</i> Kimura	키버들	B
						<i>Salix purpurea</i> var. <i>smithiana</i> Trautv.	당키버들	A
						<i>Salix viminalis</i> L.	육지꽃버들	A; B
<i>Olenecamptus clarus</i> Pascoe	점박이염소하늘소	가래나무과(Juglandaceae)	<i>Juglans regia</i> L.	호두나무	E			
			뽕나무과(Moraceae)	<i>Morus alba</i> L.	뽕나무	A; E		
				<i>Morus</i> spp.	뽕나무류	B; D		
<i>Olenecamptus cretaceus</i> Bates	테두리염소하늘소	느릅나무과(Ulmaceae)	<i>Celtis sinensis</i> Pers.	팽나무	E			
			뽕나무과(Moraceae)	<i>Zelkova serrata</i> (Thunb.) Makino	느티나무	E		
				<i>Morus</i> spp.	뽕나무류	B; D		
<i>Olenecamptus formosanus</i> Pic	굴피염소하늘소	가래나무과(Juglandaceae)	<i>Juglans regia</i> L.	호두나무	E			
			뽕나무과(Moraceae)	<i>Morus alba</i> L.	뽕나무	<b>New record</b>		
<i>Olenecamptus octopustulatus</i> (Motschulsky)	염소하늘소	참나무과(Fagaceae)	<i>Quercus</i> spp.	참나무류	A; B; D			
			층층나무과(Cornaceae)	<i>Cornus controversa</i> Hemsl.	층층나무	E		
<i>Olenecamptus subobliteratus</i> Pic	흰염소하늘소	가래나무과(Juglandaceae)		<i>Juglans regia</i> L.	호두나무	E		
			<i>Palimna liturata</i> (Bates)	단풍나무과(Aceraceae)	<i>Acer pictum</i> subsp. <i>mono</i> (Maxim.) Ohashi	고로쇠나무	A; B; D	
<i>Acer pictum</i> Thunb.	털고로쇠나무	A						
장미과(Rosaceae)	<i>Malus pumila</i> Mill.	사과나무			B; D			
	<i>Phytoecia rufiventris</i> Gautier	국화하늘소	국화과(Compositae)	<i>Artemisia koidzumii</i> Nakai	울무쭉	A		
<i>Artemisia princeps</i> Pamp.				쭉	E			
<i>Aster</i> spp.				참취류	A			
<i>Chrysanthemum</i> spp.				쭉갓류	A			
포도과(Vitaceae)				<i>Vitis</i> spp.	포도류	C		
				<i>Pogonocherus dimidiatus</i> Blessig	새뽕하늘소	느릅나무과(Ulmaceae)	<i>Ulmus</i> spp.	느릅나무류
두릅나무과(Araliaceae)	<i>Aralia elata</i> (Miq.) Seem.	두릅나무	C; E					
	<i>Fatsia japonica</i> (Thunb.) Decne. & Planch.	팔손이	B; D					
	참나무과(Fagaceae)	<i>Fagus engleriana</i> Seemen ex Diels	너도밤나무			B; D		
<i>Fagus</i> spp.		너도밤나무류	A					
<i>Psacotheta hilaris</i> (Pascoe)	울도하늘소	피나무과(Tiliaceae)	<i>Tilia amurensis</i> Rupr.	피나무	B; D			
			두릅나무과(Araliaceae)	<i>Dendropanax morbiferus</i> H. Lev.	황철나무	B		
		<i>Fatsia japonica</i> (Thunb.) Decne. & Planch.		팔손이	A; B; D			
		<i>Populus maximowiczii</i> A. Henry		황철나무	D			
		버드나무과(Salicaceae)		<i>Artocarpus altilis</i> (Parkinson) Fosberg	뽕나무	A		
			뽕나무과(Moraceae)	<i>Ficus carica</i> L.	무화과나무	A; B; D; E		
<i>Morus alba</i> L.	뽕나무	E						
<i>Morus</i> spp.	뽕나무류	A; B; D						
<i>Pterolophia annulata</i> (Chevrolat)	큰곰보하늘소	녹나무과(Lauraceae)	<i>Machilus thunbergii</i> Siebold & Zucc.	후박나무	E			
			느릅나무과(Ulmaceae)	<i>Celtis sinensis</i> Pers.	팽나무	E		
		콩과(Leguminosae)		<i>Albizia julibrissin</i> Durazz.	자귀나무	E		

CERAMBYCIDAE			HOST PLANT			REF. <sup>2</sup>
Subf. <sup>1</sup>	Scientific name	Korean name	Family	Scientific name	Korean name	
	<i>Pterolophia caudata</i> Bates	카우다타곰보하늘소	감나무과(Ebenaceae)	<i>Diospyros kaki</i> Thunb.	감나무	E
			뽕나무과(Moraceae)	<i>Morus bombycis</i> Koidz.	산뽕나무	E
	<i>Pterolophia granulata</i> (Motschulsky)	흰점곰보하늘소	느릅나무과(Ulmaceae)	<i>Ulmus davidiana</i> var. <i>japonica</i> (Rehder) Nakai	느릅나무	B; D
				<i>Ulmus</i> spp.	느릅나무류	A
			매죽나무과(Styracaceae)	<i>Styrax japonicus</i> Siebold & Zucc.	매죽나무	B; D
			버드나무과(Salicaceae)	<i>Salix chaenomeloides</i> Kimura	왕버들	B; D
				<i>Salix</i> spp.	버드나무류	A
			뽕나무과(Moraceae)	<i>Morus alba</i> L.	뽕나무	A
				<i>Morus</i> spp.	뽕나무류	B; D
			운향과(Rutaceae)	<i>Citrus</i> spp.	귤류	B; D
			콩과(Leguminosae)	<i>Albizia julibrissin</i> Durazz.	자귀나무	B; D
				<i>Albizia</i> spp.	자귀나무류	A
	<i>Pterolophia jugosa</i> (Bates)	흰곰보하늘소	뽕나무과(Moraceae)	<i>Morus</i> spp.	뽕나무류	B; D
			운향과(Rutaceae)	<i>Citrus</i> spp.	귤류	B; D
	<i>Pterolophia maacki</i> (Blessig)	대륙곰보하늘소	가래나무과(Juglandaceae)	<i>Juglans regia</i> L.	호두나무	E
			느릅나무과(Ulmaceae)	<i>Celtis sinensis</i> Pers.	팽나무	E
			대극과(Euphorbiaceae)	<i>Mallotus japonicus</i> (Thunb.) Muell. Arg.	예덕나무	E
			뽕나무과(Moraceae)	<i>Morus alba</i> L.	뽕나무	E
			운향과(Rutaceae)	<i>Zanthoxylum schinifolium</i> Siebold & Zucc.	산초나무	E
	<i>Pterolophia multinotata</i> Pic	우리곰보하늘소	가래나무과(Juglandaceae)	<i>Juglans regia</i> L.	호두나무	E
			느릅나무과(Ulmaceae)	<i>Celtis sinensis</i> Pers.	팽나무	E
			대극과(Euphorbiaceae)	<i>Mallotus japonicus</i> (Thunb.) Muell. Arg.	예덕나무	E
			콩과(Leguminosae)	<i>Albizia julibrissin</i> Durazz.	자귀나무	E
	<i>Pterolophia zonata</i> (Bates)	흰띠곰보하늘소	느릅나무과(Ulmaceae)	<i>Ulmus davidiana</i> var. <i>japonica</i> (Rehder) Nakai	느릅나무	B; D
			버드나무과(Salicaceae)	<i>Salix</i> spp.	버드나무류	B; D
			뽕나무과(Moraceae)	<i>Morus</i> spp.	뽕나무류	B; D
			운향과(Rutaceae)	<i>Citrus</i> spp.	귤류	B; D
			장미과(Rosaceae)	<i>Malus pumila</i> Mill.	사과나무	B; D
	<i>Rhopaloscelis unifasciatus</i> Blessig	무늬곤봉하늘소	가래나무과(Juglandaceae)	<i>Juglans regia</i> L.	호두나무	<b>New record</b>
			버드나무과(Salicaceae)	<i>Populus</i> spp.	사시나무류	A
				<i>Salix babylonica</i> L.	수양버들	A; B; D
			콩과(Leguminosae)	<i>Lespedeza bicolor</i> Turcz.	싸리	E
	<i>Saperda interrupta</i> Gebler	무늬박이긴하늘소	소나무과(Pinaceae)	<i>Abies holophylla</i> Maxim.	전나무	E
				<i>Abies nephrolepis</i> (Trautv.) Maxim.	분비나무	A; B; D
				<i>Larix olgensis</i> var. <i>amurensis</i> (Kolesn.) Kitag.	만주잎갈나무	D
				<i>Larix olgensis</i> var. <i>koreana</i> (Nakai) Nakai	잎갈나무	A; B
				<i>Tsuga diversifolia</i> (Maxim.) Mast.	줄술송나무	A; B
				<i>Tsuga sieboldii</i> Carriere	솔송나무	D
	<i>Saperda octomaculata</i> Blessig	팔점긴하늘소	느릅나무과(Ulmaceae)	<i>Ulmus davidiana</i> var. <i>japonica</i> (Rehder) Nakai	느릅나무	D
			장미과(Rosaceae)	<i>Sorbus</i> spp.	마가목류	D
	<i>Saperda tetrastigma</i> Bates	노란팔점긴하늘소	다래나무과(Actinidiaceae)	<i>Actinidia</i> spp.	다래나무류	D
	<i>Sciades fasciatus</i> (Matsushita)	정하늘소	느릅나무과(Ulmaceae)	<i>Celtis jessoensis</i> Koidz.	풍계나무	E
	<i>Thyestilla gebleri</i> (Faldermann)	삼하늘소	국화과(Compositae)	<i>Cirsium</i> spp.	영경퀴류	A
			삼과(Cannabaceae)	<i>Cannabis sativa</i> L.	삼	A
			쐨기풀과(Urticaceae)	<i>Boehmeria nivea</i> (L.) Gaudich.	모시풀	A
LE	<i>Acmaeops angusticollis</i> (Gebler)	풀색하늘소	소나무과(Pinaceae)	<i>Abies nephrolepis</i> (Trautv.) Maxim.	분비나무	A
	<i>Acmaeops septentrionis</i> (C. G. Thomson)	황줄박이풀색하늘소	소나무과(Pinaceae)	<i>Picea jezoensis</i> (Siebold & Zucc.) Carriere	가문비나무	B; D
	<i>Acmaeops smaragdulus</i> (Fabricius)	털가슴풀색하늘소	소나무과(Pinaceae)	<i>Abies nephrolepis</i> (Trautv.) Maxim.	분비나무	B; D
	<i>Anastrangalia sequensi</i> (Reitter)	옆검은산꽃하늘소	소나무과(Pinaceae)	<i>Larix olgensis</i> var. <i>koreana</i> (Nakai) Nakai	잎갈나무	A; B
	<i>Carilia virginea</i> (Linnaeus)	작은청둥하늘소	층층나무과(Cornaceae)	<i>Cornus controversa</i> Hemsl.	층층나무	E
	<i>Corymbia rubra</i> (Linnaeus)	붉은산꽃하늘소	소나무과(Pinaceae)	<i>Pinus densiflora</i> Siebold & Zucc.	소나무	E
				<i>Pinus thunbergii</i> Parl.	곰솔	<b>New record</b>
			자작나무과(Betulaceae)	<i>Alnus hirsuta</i> f. <i>glabra</i> T.B. Lee	민물오리나무	A; B; D
	<i>Corymbia rubra</i> (Linnaeus)	붉은산꽃하늘소	참나무과(Fagaceae)	<i>Quercus acutissima</i> Carruth.	상수리나무	B; D
				<i>Quercus serrata</i> Thunb. ex Murray	줄참나무	A
	<i>Corymbia variicornis</i> (Dalman)	알락수염붉은산꽃하늘소	소나무과(Pinaceae)	<i>Abies nephrolepis</i> (Trautv.) Maxim.	분비나무	A; B; D
				<i>Abies</i> spp.	전나무류	A
				<i>Larix olgensis</i> var. <i>koreana</i> (Nakai) Nakai	잎갈나무	A; B; D
	<i>Gnathacmaeops pratensis</i> (Laicharting)	줄박이풀색하늘소	단풍나무과(Aceraceae)	<i>Acer pictum</i> var. <i>truncatum</i> (Bunge) C. S. Chang	만주고로쇠	A; B
				<i>Acer</i> spp.	단풍나무류	D
	<i>Leptura arcuata</i> Panzer	긴알락꽃하늘소	소나무과(Pinaceae)	<i>Abies nephrolepis</i> (Trautv.) Maxim.	분비나무	A; B; D
				<i>Larix olgensis</i> var. <i>amurensis</i> (Kolesn.) Kitag.	만주잎갈나무	D
				<i>Larix olgensis</i> var. <i>koreana</i> (Nakai) Nakai	잎갈나무	A; B
			자작나무과(Betulaceae)	<i>Alnus sibirica</i> Fisch. ex Turcz.	물오리나무	E

CERAMBYCIDAE			HOST PLANT			REF. <sup>2</sup>
Subf. <sup>1</sup>	Scientific name	Korean name	Family	Scientific name	Korean name	
	<i>Leptura duodecimguttata</i> Fabricius	열두점박이꽃하늘소	자작나무과(Betulaceae)	<i>Betula davurica</i> Pallas	물박달나무	E
			장미과(Rosaceae)	<i>Malus pumila</i> Mill.	사과나무	<b>New record</b>
	<i>Leptura ochraceofasciata</i> (Motschulsky)	녁줄꽃하늘소	소나무과(Pinaceae)	<i>Abies</i> spp.	전나무류	A; D
				<i>Picea jezoensis</i> (Siebold & Zucc.) Carriere	가문비나무	A; B; D
				<i>Pinus</i> spp.	소나무류	A; B; D
			자작나무과(Betulaceae)	<i>Betula platyphylla</i> var. <i>japonica</i> (Miq.) H. Hara	자작나무	B; D
	<i>Leptura quadrifasciata</i> Linnaeus	북방꽃하늘소	버드나무과(Salicaceae)	<i>Salix</i> spp.	버드나무류	A; B; D
			소나무과(Pinaceae)	<i>Abies</i> spp.	전나무류	A
			자작나무과(Betulaceae)	<i>Betula platyphylla</i> var. <i>japonica</i> (Miq.) H. Hara	자작나무	A; B; D
	<i>Megaleptura thoracica</i> (Creutzer)	홍가슴꽃하늘소	소나무과(Pinaceae)	<i>Abies firma</i> Siebold & Zucc.	일본전나무	A; B; D
				<i>Larix olgensis</i> var. <i>amurensis</i> (Kolesn.) Kitag.	만주잎갈나무	D
				<i>Larix olgensis</i> var. <i>koreana</i> (Nakai) Nakai	잎갈나무	A; B
	<i>Necydalis major</i> Linnaeus	벌하늘소	느릅나무과(Ulmaceae)	<i>Ulmus</i> spp.	느릅나무류	B; D
			버드나무과(Salicaceae)	<i>Populus</i> spp.	사시나무류	A
				<i>Salix</i> spp.	버드나무류	B; D
			자작나무과(Betulaceae)	<i>Alnus</i> spp.	오리나무류	A
			장미과(Rosaceae)	<i>Prunus</i> spp.	벚나무류	A; B; D
			참나무과(Fagaceae)	<i>Fagus engleriana</i> Seemen ex Diels	너도밤나무	D
				<i>Fagus</i> spp.	너도밤나무류	A; B
	<i>Pachyta bicuneata</i> Motschulsky	무늬넓은어깨하늘소	소나무과(Pinaceae)	<i>Abies nephrolepis</i> (Trautv.) Maxim.	분비나무	A; B; D
				<i>Larix olgensis</i> var. <i>amurensis</i> (Kolesn.) Kitag.	만주잎갈나무	D
				<i>Larix olgensis</i> var. <i>koreana</i> (Nakai) Nakai	잎갈나무	A; B
				<i>Picea</i> spp.	가문비나무류	A; B; D
			소나무과(Pinaceae)	<i>Abies</i> spp.	전나무류	A; B; D
				<i>Larix olgensis</i> var. <i>amurensis</i> (Kolesn.) Kitag.	만주잎갈나무	D
				<i>Larix olgensis</i> var. <i>koreana</i> (Nakai) Nakai	잎갈나무	A; B
				<i>Picea</i> spp.	가문비나무류	A; B; D
				<i>Pinus</i> spp.	소나무류	A; B; D
	<i>Pedostrangalia femoralis</i> (Motschulsky)	노랑점꽃하늘소	장미과(Rosaceae)	<i>Spiraea</i> spp.	조팝나무류	A; B; D
	<i>Pidonia similis</i> (Kraatz)	산줄각시하늘소	버드나무과(Salicaceae)	<i>Salix</i> spp.	버드나무류	D
	<i>Pidonia suworovi</i> Baeckmann	북방각시하늘소	소나무과(Pinaceae)	<i>Larix olgensis</i> var. <i>amurensis</i> (Kolesn.) Kitag.	만주잎갈나무	D
				<i>Larix olgensis</i> var. <i>koreana</i> (Nakai) Nakai	잎갈나무	A; B
	<i>Rhagium inquisitor</i> (Linnaeus)	소나무하늘소	소나무과(Pinaceae)	<i>Abies holophylla</i> Maxim.	전나무	B; D
				<i>Abies nephrolepis</i> (Trautv.) Maxim.	분비나무	E
				<i>Abies</i> spp.	전나무류	A
				<i>Larix kaempferi</i> (Lamb.) Carriere	일본잎갈나무	A
				<i>Picea jezoensis</i> (Siebold & Zucc.) Carriere	가문비나무	A; B; D
				<i>Picea koraiensis</i> Nakai	종비나무	A
				<i>Pinus densiflora</i> Siebold & Zucc.	소나무	A
				<i>Pinus</i> spp.	소나무류	B; D
			자작나무과(Betulaceae)	<i>Betula</i> spp.	자작나무류	A
			참나무과(Fagaceae)	<i>Fagus</i> spp.	너도밤나무류	A
	<i>Sachalinobia rugipennis</i> (Newman)	곰보꽃하늘소	소나무과(Pinaceae)	<i>Abies</i> spp.	전나무류	A; D
	<i>Strangalia attenuata</i> (Linnaeus)	줄갈따구꽃하늘소	참나무과(Fagaceae)	<i>Castanea crenata</i> Siebold & Zucc.	밤나무	D
				<i>Castanea</i> spp.	밤나무류	A; B
				<i>Quercus</i> spp.	참나무류	A; B
PR	<i>Callipogon relictus</i> Semenov	장수하늘소	느릅나무과(Ulmaceae)	<i>Ulmus</i> spp.	느릅나무류	C
			물푸레나무과(Oleaceae)	<i>Fraxinus rhynchophylla</i> Hance	물푸레나무	D; G
				<i>Fraxinus</i> spp.	물푸레나무류	C
			자작나무과(Betulaceae)	<i>Carpinus laxiflora</i> (Siebold & Zucc.) Blume	서어나무	A; B; D; G
				<i>Carpinus</i> spp.	서어나무류	C
			참나무과(Fagaceae)	<i>Quercus mongolica</i> Fisch. ex Ledeb.	신갈나무	A; B; D; G
				<i>Quercus</i> spp.	참나무류	C
	<i>Eurypoda batesi</i> Gahan	사슴하늘소	참나무과(Fagaceae)	<i>Castanopsis</i> spp.	모밀잣밤나무류	C
	<i>Megapis sinica</i> (White)	버들하늘소	느릅나무과(Ulmaceae)	<i>Ulmus</i> spp.	느릅나무류	A; B; D; G
			단풍나무과(Aceraceae)	<i>Acer pictum</i> subsp. <i>mono</i> (Maxim.) Ohashi	고로쇠나무	E
			대극과(Euphorbiaceae)	<i>Mallotus japonicus</i> (Thunb.) Muell. Arg.	예덕나무	A
			물푸레나무과(Oleaceae)	<i>Fraxinus mandshurica</i> Rupr.	들메나무	A
				<i>Fraxinus</i> spp.	물푸레나무류	A; D; G
			버드나무과(Salicaceae)	<i>Populus alba</i> L.	은행양	B; D; G
				<i>Populus maximowiczii</i> A. Henry	황철나무	A; B; D; G
				<i>Populus nigra</i> var. <i>italica</i> Koehne	양버들	B; D; G
				<i>Populus</i> spp.	사시나무류	A; B
				<i>Populus tomentiglandulosa</i> T. B. Lee	은사시나무	E

CERAMBYCIDAE			HOST PLANT			REF. <sup>2</sup>			
Subf. <sup>1</sup>	Scientific name	Korean name	Family	Scientific name	Korean name				
Prionus	<i>Prionus insularis</i> Motschulsky	톱하늘소		<i>Salix babylonica</i> L.	수양버들	A			
				<i>Salix</i> spp.	버드나무류	B; D; G			
				뽕나무과(Moraceae)	<i>Morus</i> spp.	뽕나무류	A		
				소나무과(Pinaceae)	<i>Abies firma</i> Siebold & Zucc.	일본전나무	A; D		
					<i>Abies holophylla</i> Maxim.	전나무	G		
					<i>Abies</i> spp.	전나무류	A; B		
					<i>Picea jezoensis</i> (Siebold & Zucc.) Carriere	가문비나무	B		
					<i>Picea</i> spp.	가문비나무류	A		
					<i>Pinus densiflora</i> Siebold & Zucc.	소나무	A; B		
					<i>Pinus</i> spp.	소나무류	A		
				자작나무과(Betulaceae)	<i>Carpinus laxiflora</i> (Siebold & Zucc.) Blume	서어나무	<b>New record</b>		
				장미과(Rosaceae)	<i>Malus pumila</i> Mill.	사과나무	B; D; G		
					<i>Prunus</i> spp.	벚나무류	D; G		
				참나무과(Fagaceae)	<i>Quercus aliena</i> Blume	갈참나무	B; D; G		
					<i>Quercus dentata</i> Thunb.	떡갈나무	A; B; D; G		
				콩과(Leguminosae)	<i>Robinia pseudoacacia</i> L.	아까시나무	A; B; D; G		
				현삼과(Scrophulariaceae)	<i>Paulownia tomentosa</i> (Thunb.) Steud.	참오동나무	A; B; D; G		
				낙우송과(Taxodiaceae)	<i>Cryptomeria japonica</i> (L.f.) D. Don	삼나무	A; B		
				느릅나무과(Ulmaceae)	<i>Ulmus</i> spp.	느릅나무류	A; B		
					<i>Zelkova serrata</i> (Thunb.) Makino	느티나무	B		
				두릅나무과(Araliaceae)	<i>Kalopanax septemlobus</i> (Thunb.) Koidz.	읍나무	B		
				소나무과(Pinaceae)	<i>Abies firma</i> Siebold & Zucc.	일본전나무	B; D		
					<i>Abies</i> spp.	전나무류	A		
					<i>Picea jezoensis</i> (Siebold & Zucc.) Carriere	가문비나무	B; D		
					<i>Picea</i> spp.	가문비나무류	A		
					<i>Pinus densiflora</i> Siebold & Zucc.	소나무	A; B; D		
				장미과(Rosaceae)	<i>Malus pumila</i> Mill.	사과나무	B; D		
참나무과(Fagaceae)	<i>Fagus</i> spp.	너도밤나무류	A						
측백나무과(Cupressaceae)	<i>Chamaecyparis obtusa</i> (Siebold & Zucc.) Endl.	편백	B						
<i>Psephactus remiger</i> Harold	반날개하늘소	느릅나무과(Ulmaceae)	<i>Chamaecyparis</i> spp.	편백류	A				
			<i>Celtis sinensis</i> Pers.	팽나무	E				
			참나무과(Fagaceae)	<i>Fagus japonica</i> Maxim.	일본너도밤나무	A			
				<i>Fagus</i> spp.	너도밤나무류	B; D			
SP	<i>Arhopalus coreanus</i> (Sharp) <i>Arhopalus rusticus</i> (Linnaeus)	큰넓적하늘소		자작나무과(Betulaceae)	<i>Betula</i> spp.	자작나무류	A; B		
				낙우송과(Taxodiaceae)	<i>Cryptomeria japonica</i> (L.f.) D. Don	삼나무	A; B; D		
				버드나무과(Salicaceae)	<i>Populus maximowiczii</i> A. Henry	황철나무	A		
					<i>Populus nigra</i> var. <i>italica</i> Koehne	양버들	A		
				소나무과(Pinaceae)	<i>Abies</i> spp.	전나무류	A		
					<i>Picea</i> spp.	가문비나무류	A		
					<i>Pinus densiflora</i> Siebold & Zucc.	소나무	A; B; D		
				자작나무과(Betulaceae)	<i>Betula</i> spp.	자작나무류	A		
				측백나무과(Cupressaceae)	<i>Chamaecyparis obtusa</i> (Siebold & Zucc.) Endl.	편백	A; B; D		
					<i>Juniperus chinensis</i> L.	향나무	A		
				<i>Asemum punctulatum</i> Blessig	꼬마작은넓적하늘소	소나무과(Pinaceae)	<i>Abies</i> spp.	전나무류	A
							<i>Picea jezoensis</i> (Siebold & Zucc.) Carriere	가문비나무	A; B; D
<i>Pinus densiflora</i> Siebold & Zucc.	소나무	A; B; D							
<i>Asemum striatum</i> (Linnaeus)	작은넓적하늘소	소나무과(Pinaceae)	<i>Abies holophylla</i> Maxim.				전나무	A; B; D	
			<i>Abies nephrolepis</i> (Trautv.) Maxim.	분비나무	A				
			<i>Abies</i> spp.	전나무류	A				
			<i>Larix kaempferi</i> (Lamb.) Carriere	일본잎갈나무	A; E				
			<i>Larix olgensis</i> var. <i>koreana</i> (Nakai) Nakai	잎갈나무	A				
			<i>Picea jezoensis</i> (Siebold & Zucc.) Carriere	가문비나무	A; B; D				
			<i>Picea koraiensis</i> Nakai	총비나무	A; B; D				
			<i>Picea</i> spp.	가문비나무류	A				
			<i>Pinus densiflora</i> Siebold & Zucc.	소나무	B; D				
			<i>Pinus koraiensis</i> Siebold & Zucc.	잣나무	A; B; D				
			<i>Pinus</i> spp.	소나무류	A; B				
			<i>Cephalallus unicolor</i> (Gahan)	넓적하늘소	소나무과(Pinaceae)	<i>Pinus</i> spp.	소나무류	A; B; D	
<i>Megasemum quadricostulatum</i> Kraatz	검은넓적하늘소	소나무과(Pinaceae)	<i>Abies firma</i> Siebold & Zucc.	일본전나무	A				
			<i>Abies</i> spp.	전나무류	A; B; D				
			<i>Picea jezoensis</i> (Siebold & Zucc.) Carriere	가문비나무	A; B; D				
			<i>Pinus</i> spp.	소나무류	A; B; D				
<i>Spondylis buprestoides</i> (Linnaeus)	검정하늘소	낙우송과(Taxodiaceae)	<i>Cryptomeria japonica</i> (L.f.) D. Don	삼나무	A; B				
			소나무과(Pinaceae)	<i>Abies firma</i> Siebold & Zucc.	일본전나무	A; B			

CERAMBYCIDAE			HOST PLANT			REF. <sup>2</sup>
Subf. <sup>1</sup>	Scientific name	Korean name	Family	Scientific name	Korean name	
<i>Tetropium castaneum</i> (Linnaeus)	단송넓적하늘소	측백나무과(Cupressaceae) 소나무과(Pinaceae)		<i>Picea</i> spp.	가문비나무류	A
				<i>Pinus densiflora</i> Siebold & Zucc.	소나무	A; B; D
				<i>Pinus</i> spp.	소나무류	A
				<i>Pinus sylvestris</i> L.	구주소나무	A
				<i>Chamaecyparis obtusa</i> (Siebold & Zucc.) Endl.	편백	A; B
				<i>Abies holophylla</i> Maxim.	전나무	B; D
				<i>Abies nephrolepis</i> (Trautv.) Maxim.	분비나무	A
				<i>Abies</i> spp.	전나무류	A
				<i>Larix olgensis</i> var. <i>koreana</i> (Nakai) Nakai	잎갈나무	A
				<i>Picea abies</i> (L.) H. Karst.	독일가문비	A
<i>Tetropium gracilicorne</i> Reitter	긴단송넓적하늘소	소나무과(Pinaceae)		<i>Picea jezoensis</i> (Siebold & Zucc.) Carriere	가문비나무	B; D
				<i>Pinus sylvestris</i> L.	구주소나무	A
				<i>Pinus</i> spp.	소나무류	B; D
				<i>Abies</i> spp.	전나무류	A
				<i>Picea jezoensis</i> (Siebold & Zucc.) Carriere	가문비나무	A
				<i>Pinus</i> spp.	소나무류	A
<i>Tetropium morishimaorum</i> Kusama et Takakuwa	애단송넓적하늘소	소나무과(Pinaceae)		<i>Larix kaempferi</i> (Lamb.) Carriere	일본잎갈나무	D

<sup>1</sup>Subf.: Subfamily (CE, Cerambycinae; DI, Disteniinae; LA, Lamiinae; LE, Lepturinae; PR, Prioninae; SP, Spondylidinae).

<sup>2</sup>REF.: References (A, Cho 1959; B, Ko 1969; C, Lee 1987; D, Chung et al. 1995; E, Kang et al. 2002; F, Williams et al. 2004; G, Shin et al. 2007; H, Lim et al. 2013a; I, Lim et al. 2003b).